

ASSOCIATION FOR
**LEARNING
ENVIRONMENTS**

CHICAGO

LearningSCAPES 2023

BRIAN REGAN
APRIL 7

This presentation is protected by U.S. and international copyright laws.

Reproduction, distribution, display and use of the presentation without written permission of the speaker is prohibited.



This program is registered with the AIA/CES for continuing professional education. As such, it does not include content that may be deemed or construed to constitute approval, sponsorship or endorsement by AIA of any method, product, service, enterprise or organization.

The statements expressed by speakers, panelists, and other participants reflect their own views and do not necessarily reflect the views or positions of The American Institute of Architects, or of AIA components, or those of their respective officers, directors, members, employees, or other organizations, groups or individuals associated with them.

Questions related to specific products and services may be addressed at the conclusion of this presentation.



Speakers List

- Dr. Tony J. Poole – Assistant Superintendent of Special Populations, CHERRY CREEK SCHOOL DISTRICT
- Jessica Blanford, AIA – Principal / Director of PK-12 Education, MOA ARCHITECTURE
- Kasia Bulkowski, AIA – Associate Principal, MOA ARCHITECTURE



Course / Learning Objectives

- Understand the broad challenges in the mental health support structure for children and adolescents in the United States.
- Leverage stakeholder engagement on mental health issues and illnesses.
- Discover strategies for planning and designing learning environments for students in mental health crises, including how to “de-institutionalize” spaces and thoughtfully integrate ligature resistant fixtures and finishes.
- Gain a new facility type to advocate for with school district clients nationwide.



Why are we here today?

A problem:

Less than half of U.S. adults and children with mental health conditions are receiving the treatment they need.

A question:

What can a school district do to address this?



How can a school district help?

ONE:

Defining the problem

TWO:

Developing the program

THREE:

Design Considerations



Cherry Creek School District

4th largest district in Colorado

70 schools

55,000 students



The Big Picture:

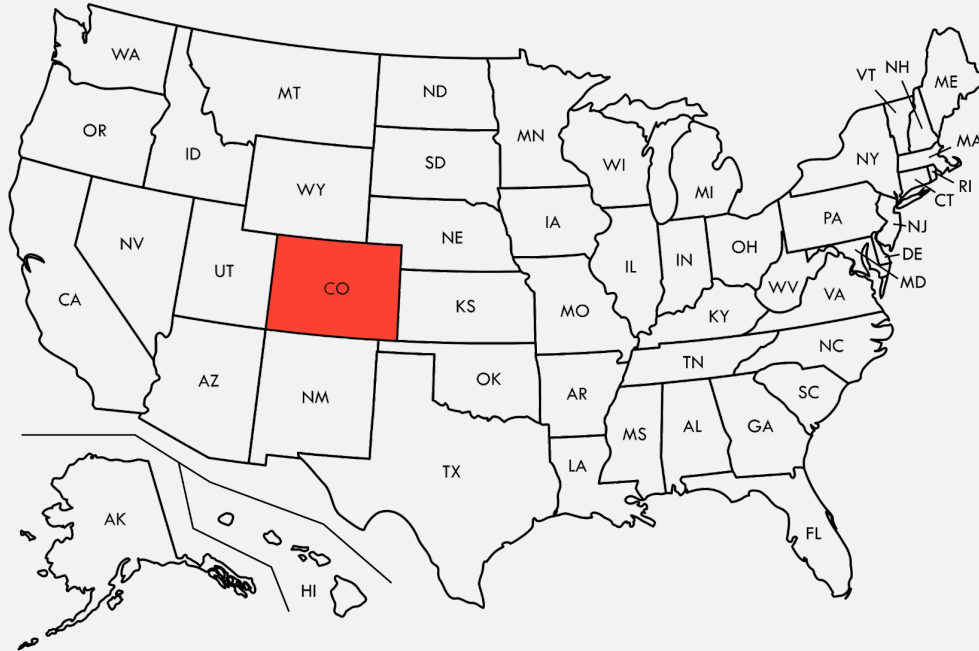
In 2018-2019, the CDC reported that among adolescents aged 12-17:

18.8% seriously considered attempting suicide.

8.9% attempted suicide.



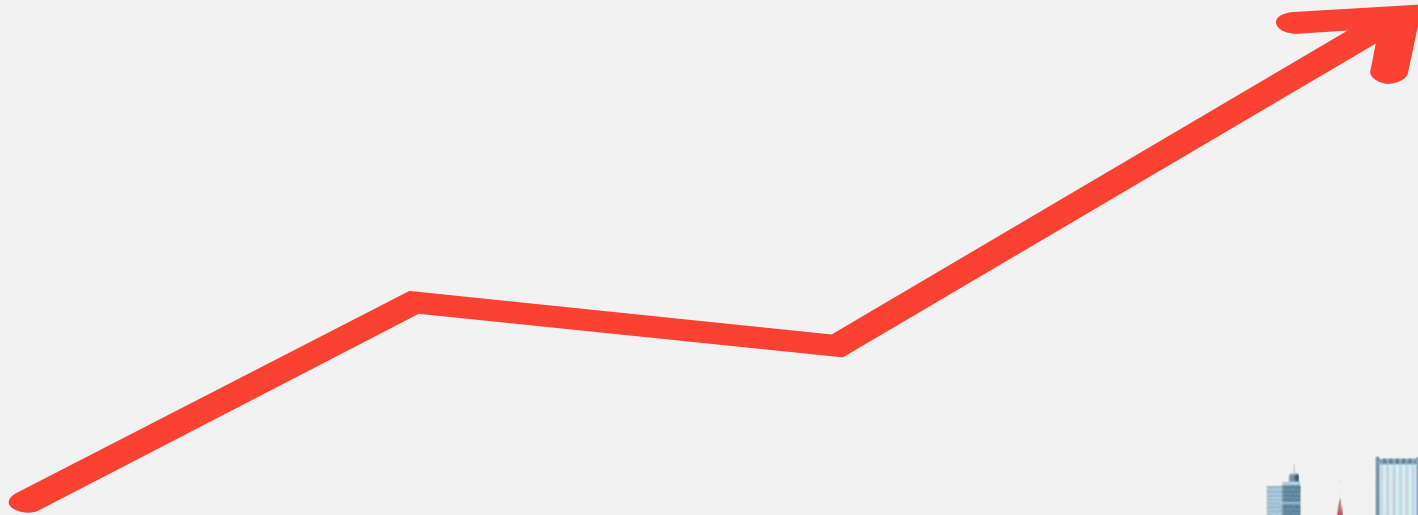
How is our state doing?



Colorado ranked **42nd**
in the nation in mental
healthcare for kids



Suicide Risk Assessments at CCSD



In any given year...

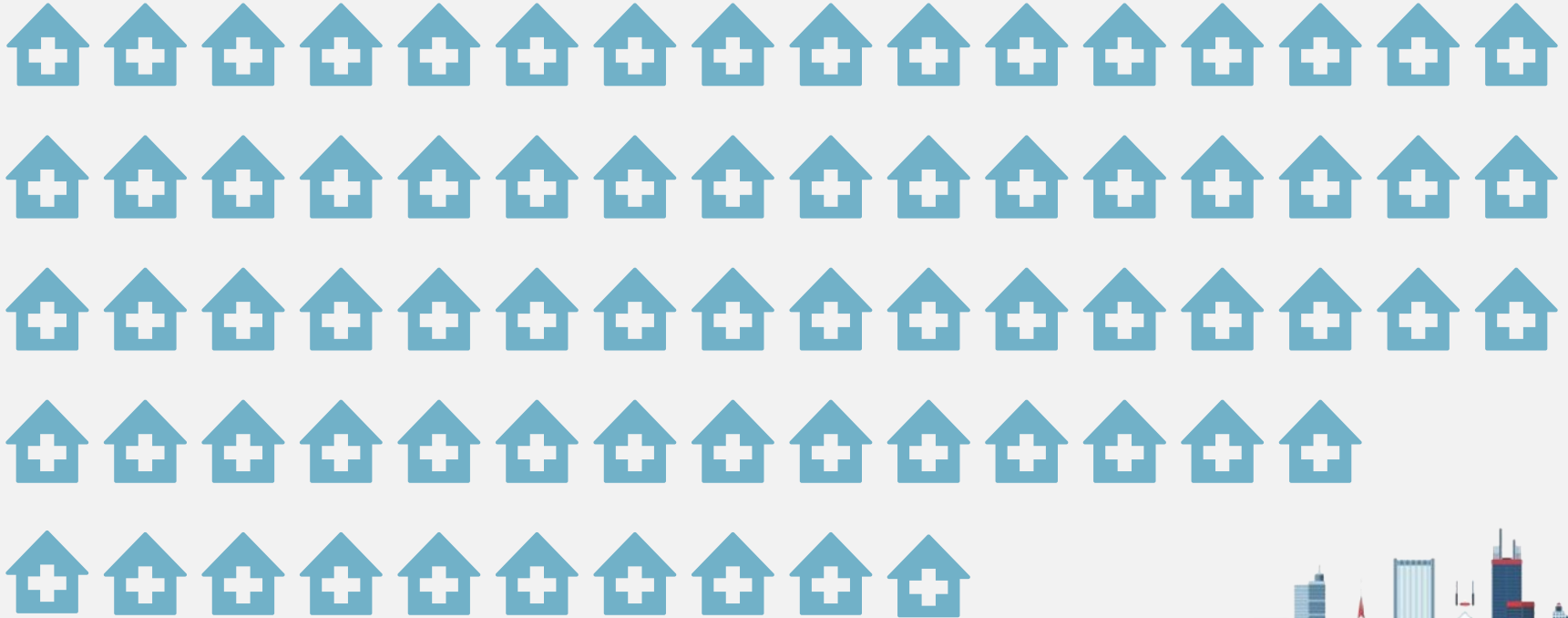


We place 50-100 students
in day treatment facilities...

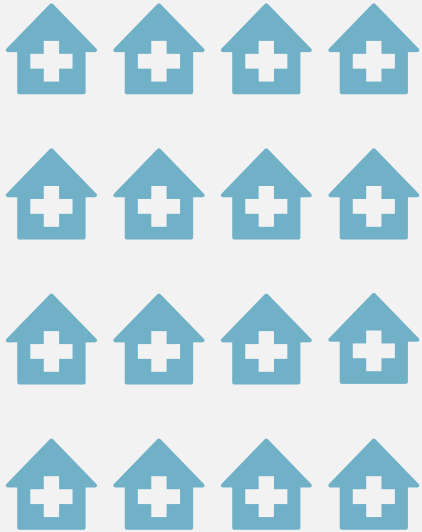
**at a cost of \$1.25 to
3 million**



10 years ago... The State of Colorado had 77 placement options.



10 years ago... **Today...**



The State of Colorado has 16 placement options.

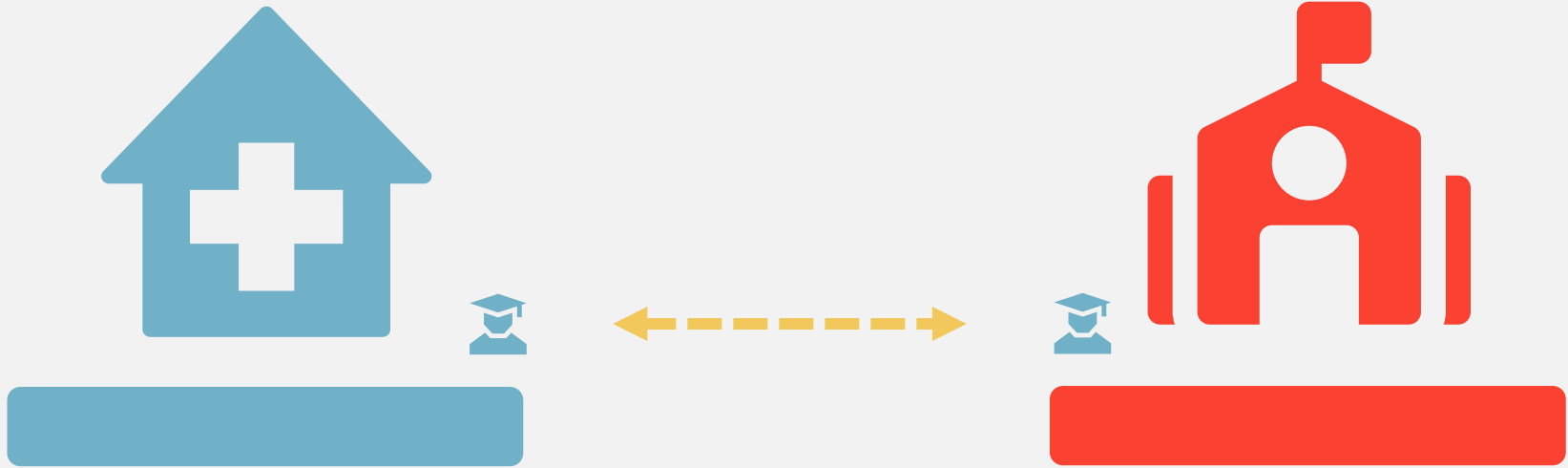


At any given point...

CCSD has an active waiting list of **5-15 students in crisis**.



The Gap



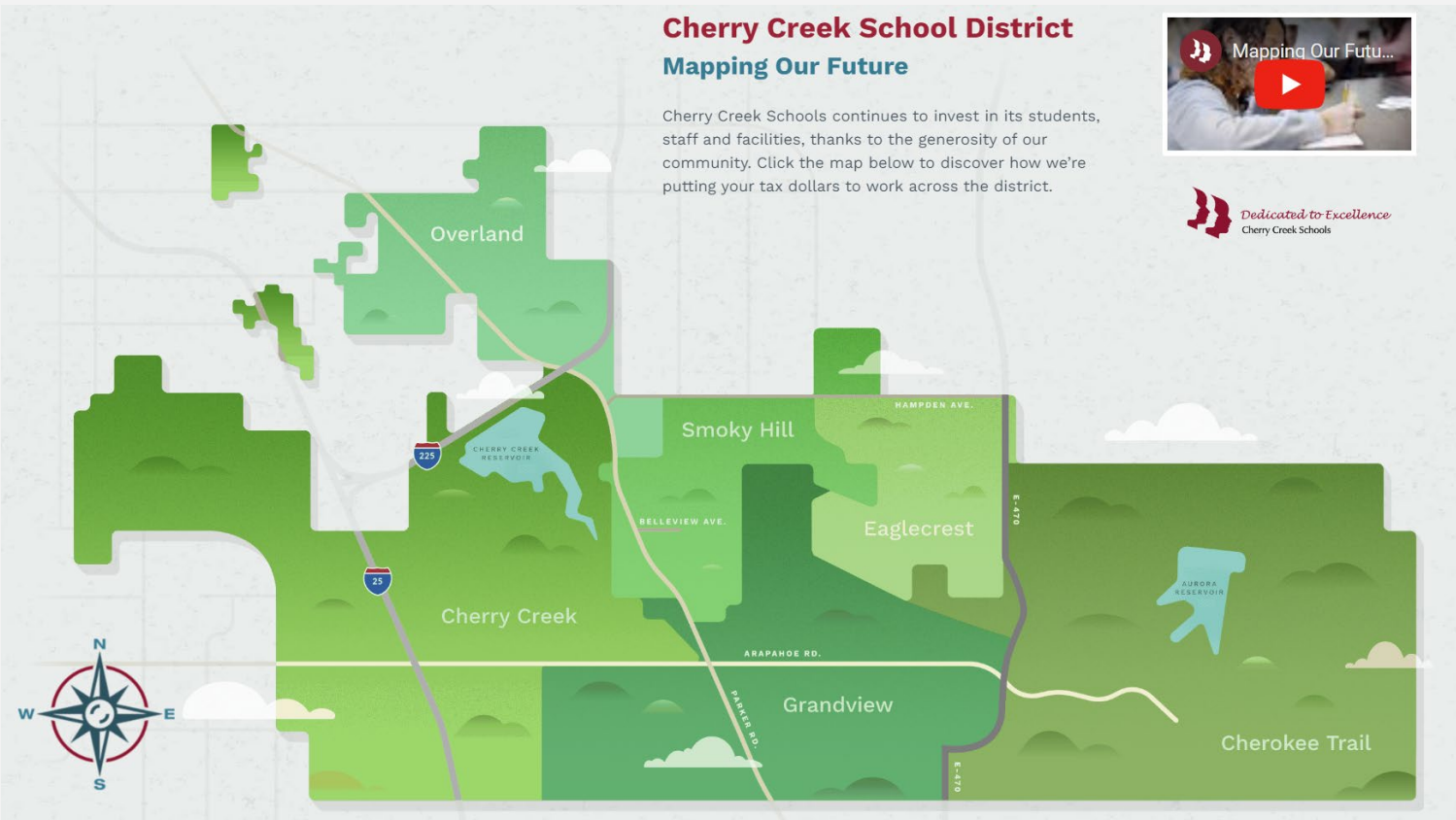
**“If you want day treatment spots,
maybe you should build your own.”**



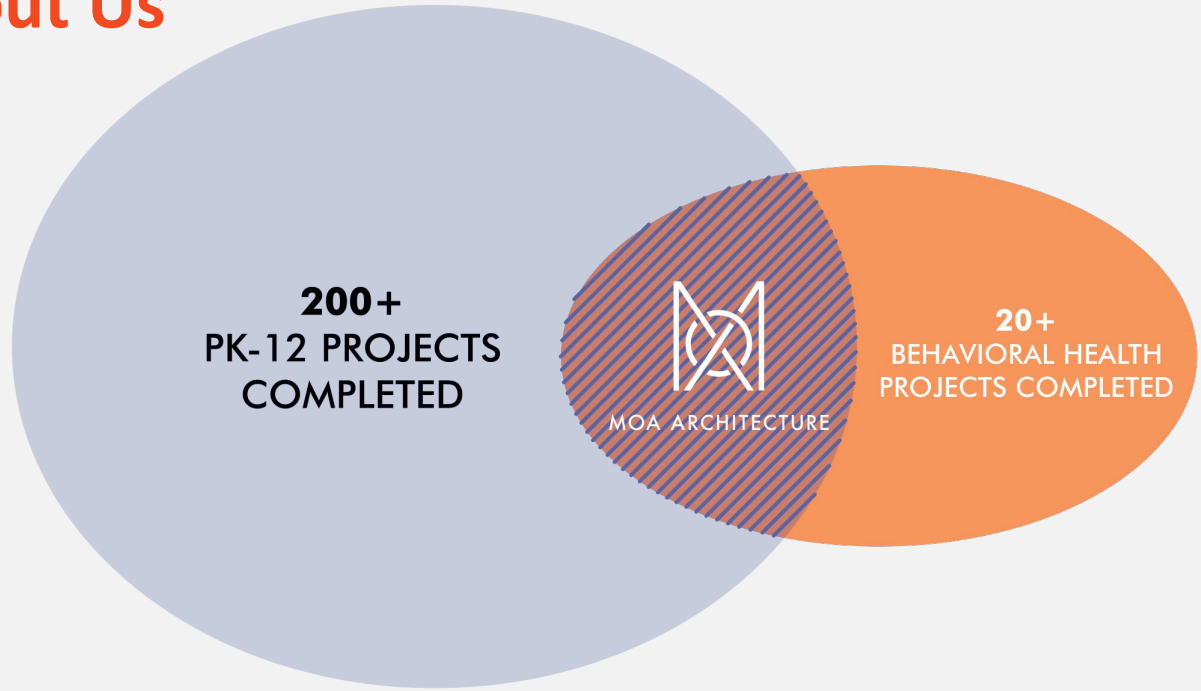
Cherry Creek School District

Mapping Our Future

Cherry Creek Schools continues to invest in its students, staff and facilities, thanks to the generosity of our community. Click the map below to discover how we're putting your tax dollars to work across the district.



A Little About Us



PK-12 Learning Environments



PK-12 Learning Environments

Programmatic areas typically found in Middle and High Schools:

Classrooms

Cafeteria

Gymnasium

Nurse's Office

Art Room

Music Room

Library

Lockers

Computer Room

Auditorium

Principal's Office

Commons Area

Outdoor Play

Media Center

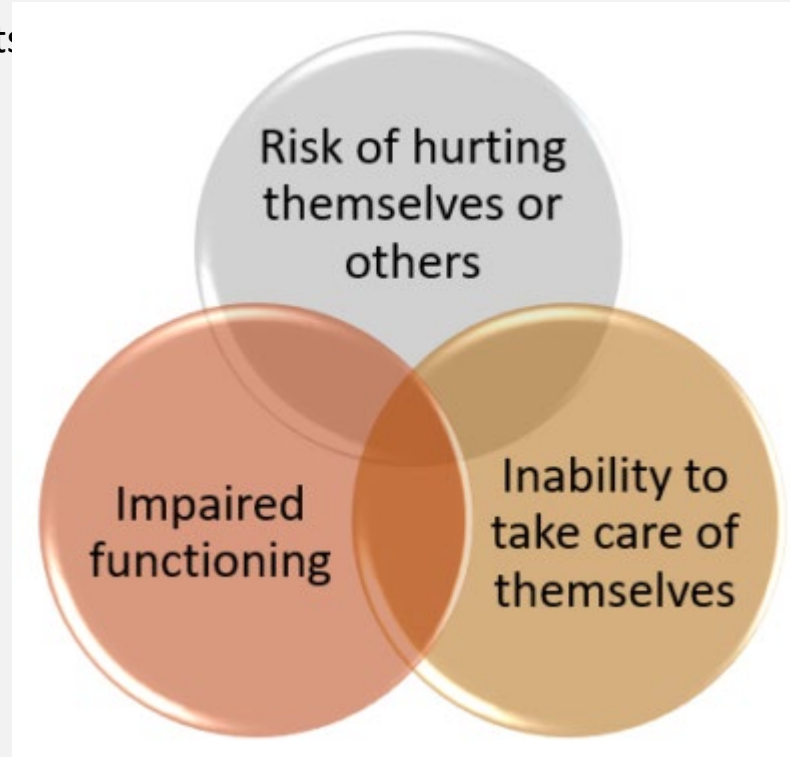
Staff Breakroom

Science Lab



What is an acute mental health crisis?

- How does it manifest itself in adolescents?
 - Externalizer
 - Internalizer



What is a day treatment center?

“Partial hospitalization program for patients with mental, emotional, and/or addictive disorders who do not require 24/7 inpatient care.”



What is a day treatment center?



Day Treatment Environments?

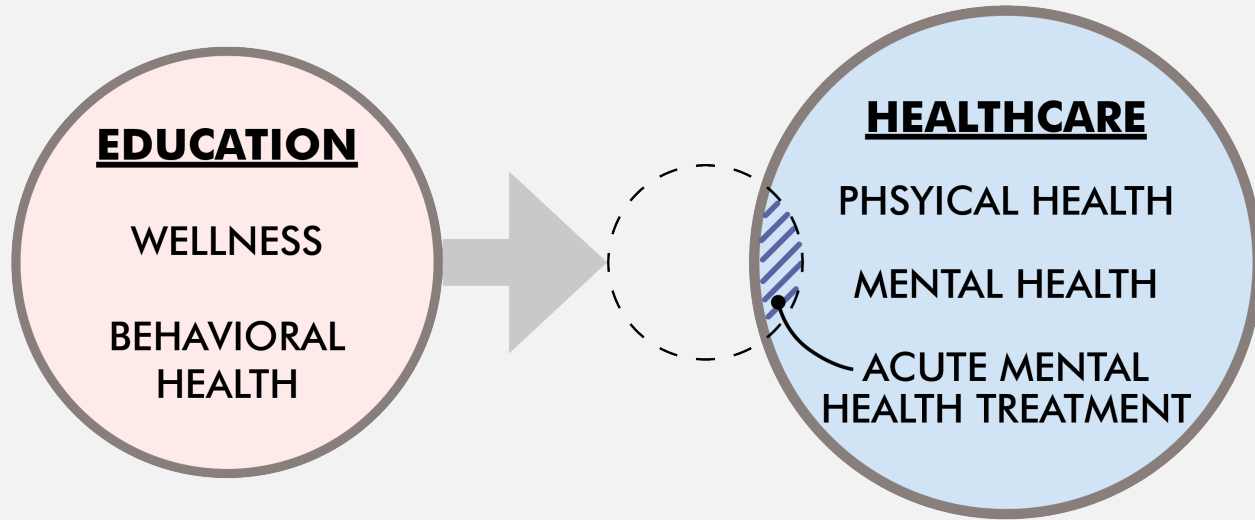
Programmatic areas typically found in Day Treatment Center:

Exam Room
Consultation Room
Group Room
Observation Room
Seclusion Room
Quiet Room
Soiled Holding

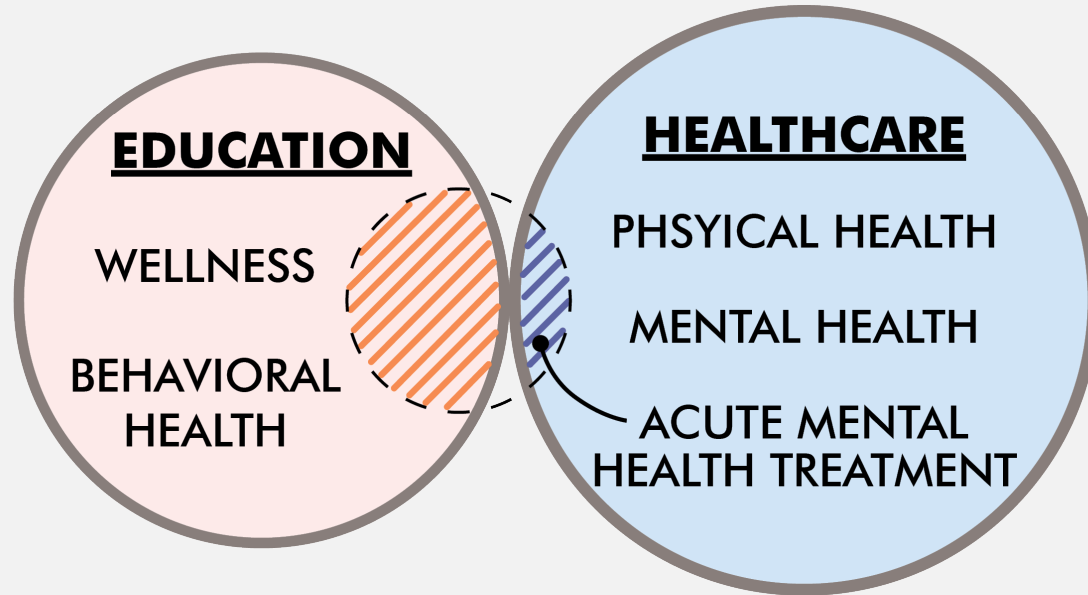
Activity/Multipurpose Room
Nurse Station
Medication Safety Zone
Nourishment Area
Patient Toilet Rooms
Clean Storage
Staff Lounge & Toilet Room



The Gap



The Gap



What is this facility?

- This facility bridges the gap between an intensive in-patient treatment center and a typical school.
- What needs to happen in this building – what is the purpose of each space
- Therapy that meets you where you are



Program Vernacular

Programmatic areas typically found in Traverse Academy:

Reception	➡	Café	←	Check-In Desk
Principals Office	➡	Focus Room	←	Seclusion Room
Counselors Office	➡	Group Therapy	←	Group Room
Classrooms	➡	Homebase	←	Activity/Day Room
Teacher's Lounge	➡	Workroom	←	Nurse Station

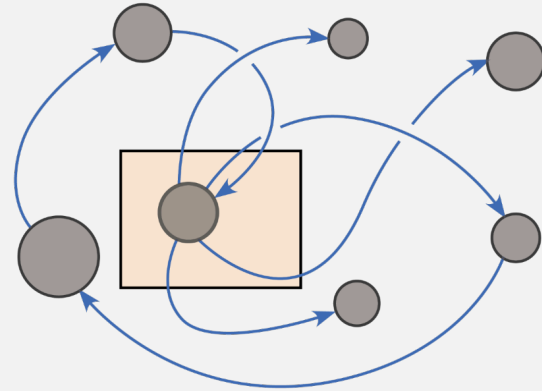
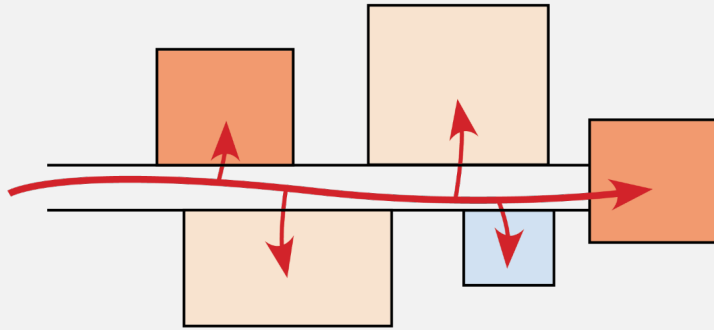


Design Approach



Mapping Student's Experience

- Linear vs. spaghetti flow diagram



“day in the life”

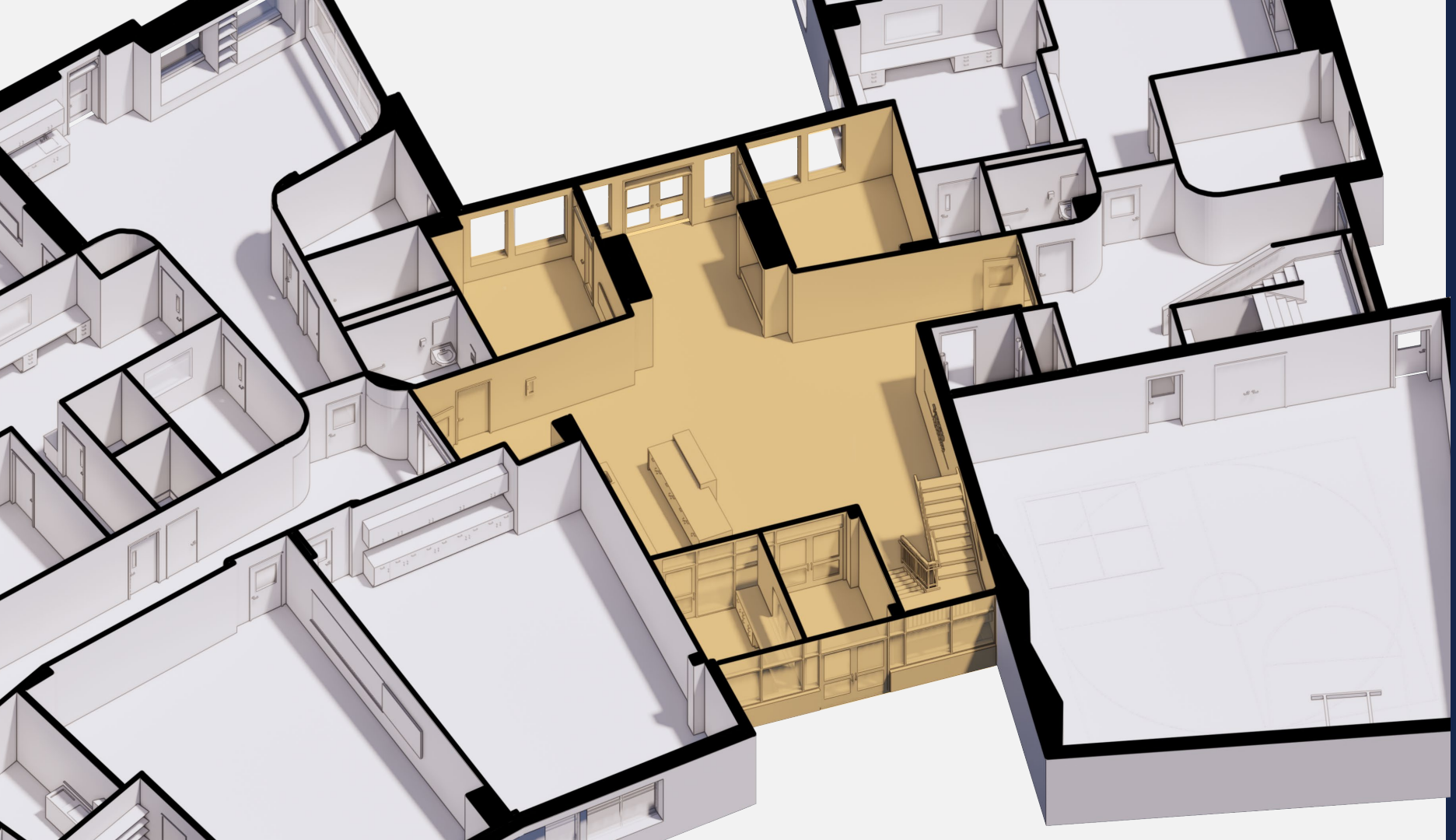


Designed to appear comfortable, attractive,
relaxing and as residential in character as possible



TRAVERSE
Academy



























A young man with short brown hair, wearing a dark jacket and jeans, sits in a blue armchair. He is holding a coffee cup and looking towards the center of the group.

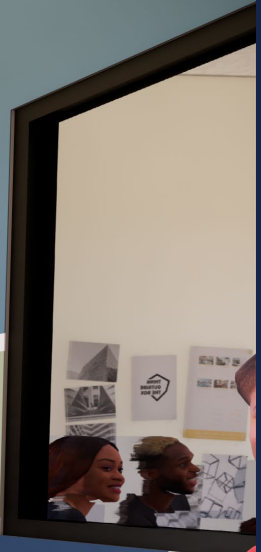
A woman with dark hair, wearing a dark blazer and pants, sits in a blue armchair. She is holding a notebook and pen, looking down at the notebook.

A man with short blonde hair, wearing a dark t-shirt and jeans, sits in a blue armchair. He is gesturing with his hands while speaking to the group.

A woman with dark hair, wearing a dark t-shirt and pants, sits in a blue armchair. She is holding a coffee cup and looking towards the center of the group.

A man with short dark hair, wearing a red hoodie and blue jeans, sits in a blue armchair. He is holding a white coffee cup and looking towards the center of the group.

A woman with dark hair, wearing a white long-sleeved shirt and shorts, sits on the floor. She is looking towards the center of the group.



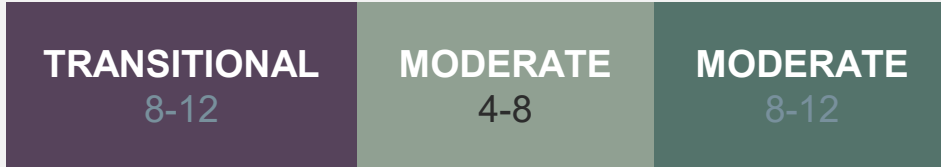


Placemaking: Inspiration

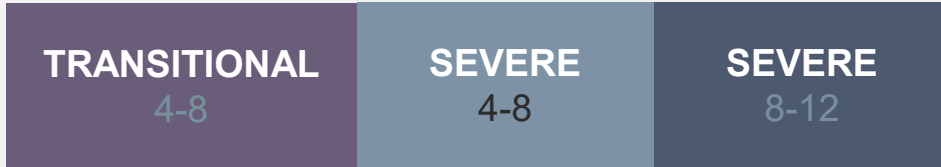


Color Study: Wayfinding

Level
Two



Level
One



Floor Plan Overview



LEVEL 1



LEVEL 2

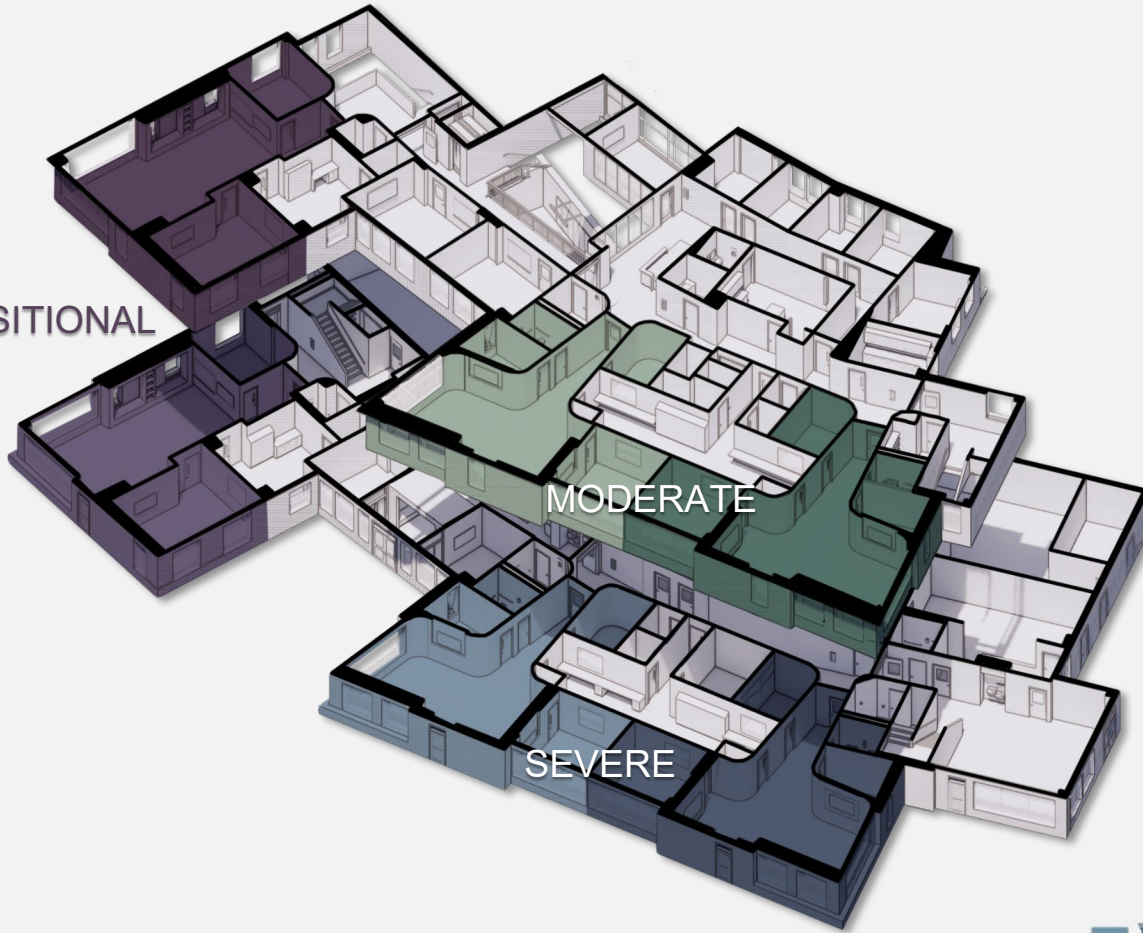


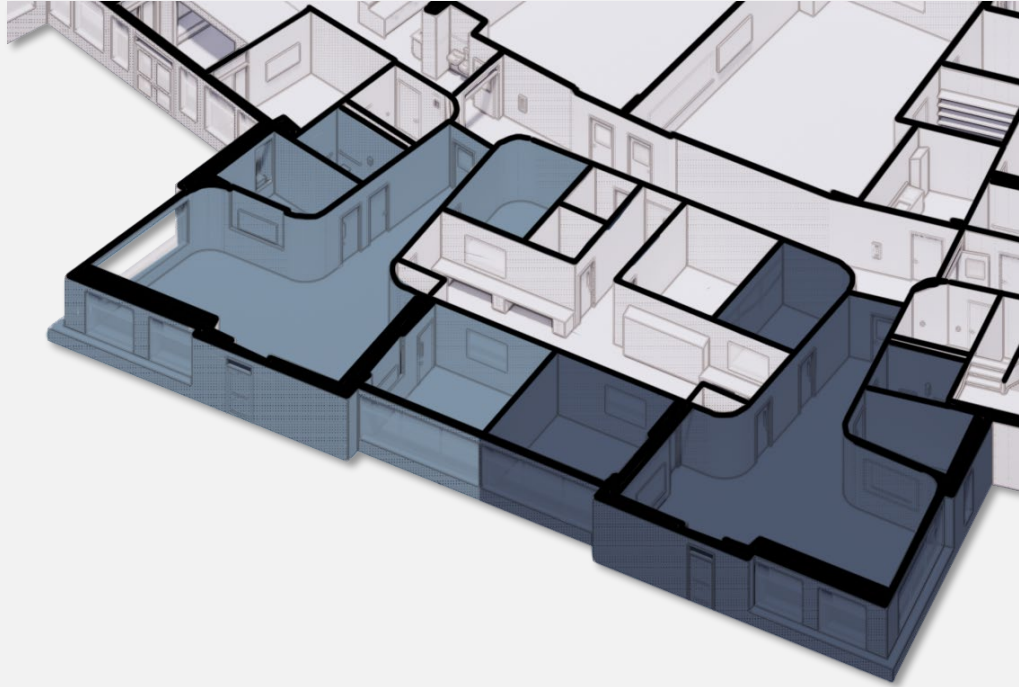
Care Models

TRANSITIONAL

MODERATE

SEVERE

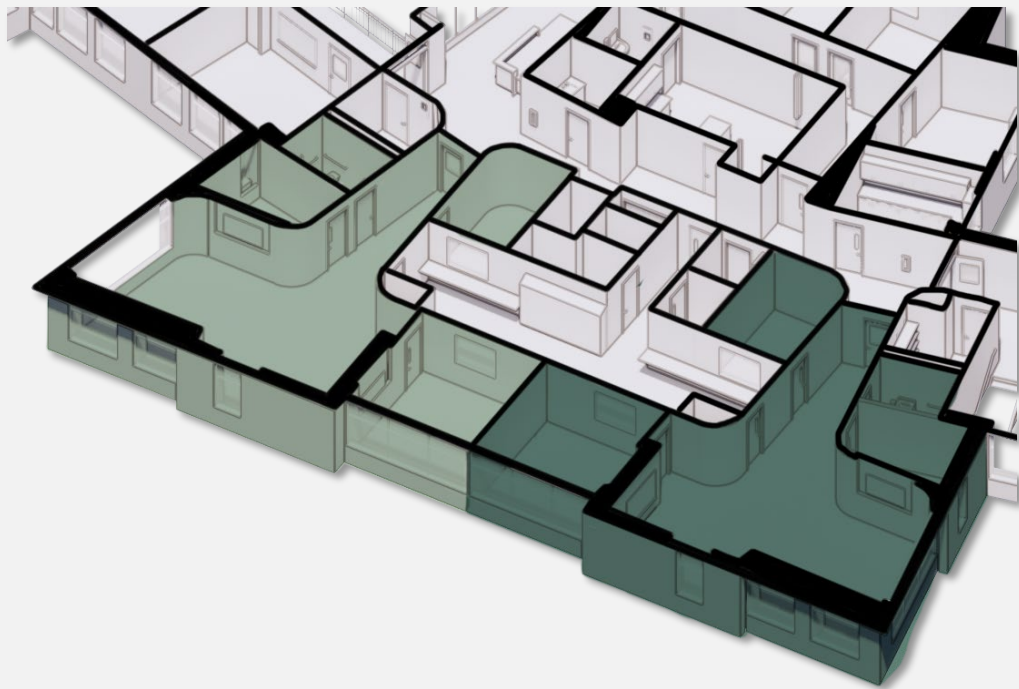




Severe

- Transitioning from an in-patient facility
- 1:4 student/staff ratio
- Intensive Outpatient Program
- Meals in classroom
- Counseling at 6-8 hours





Moderate

- 1:7 student/staff ratio
- Counseling at 4-5 hours
- Meals likely in classroom
- Return to some core instruction within the pod



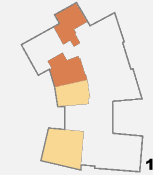
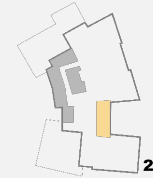
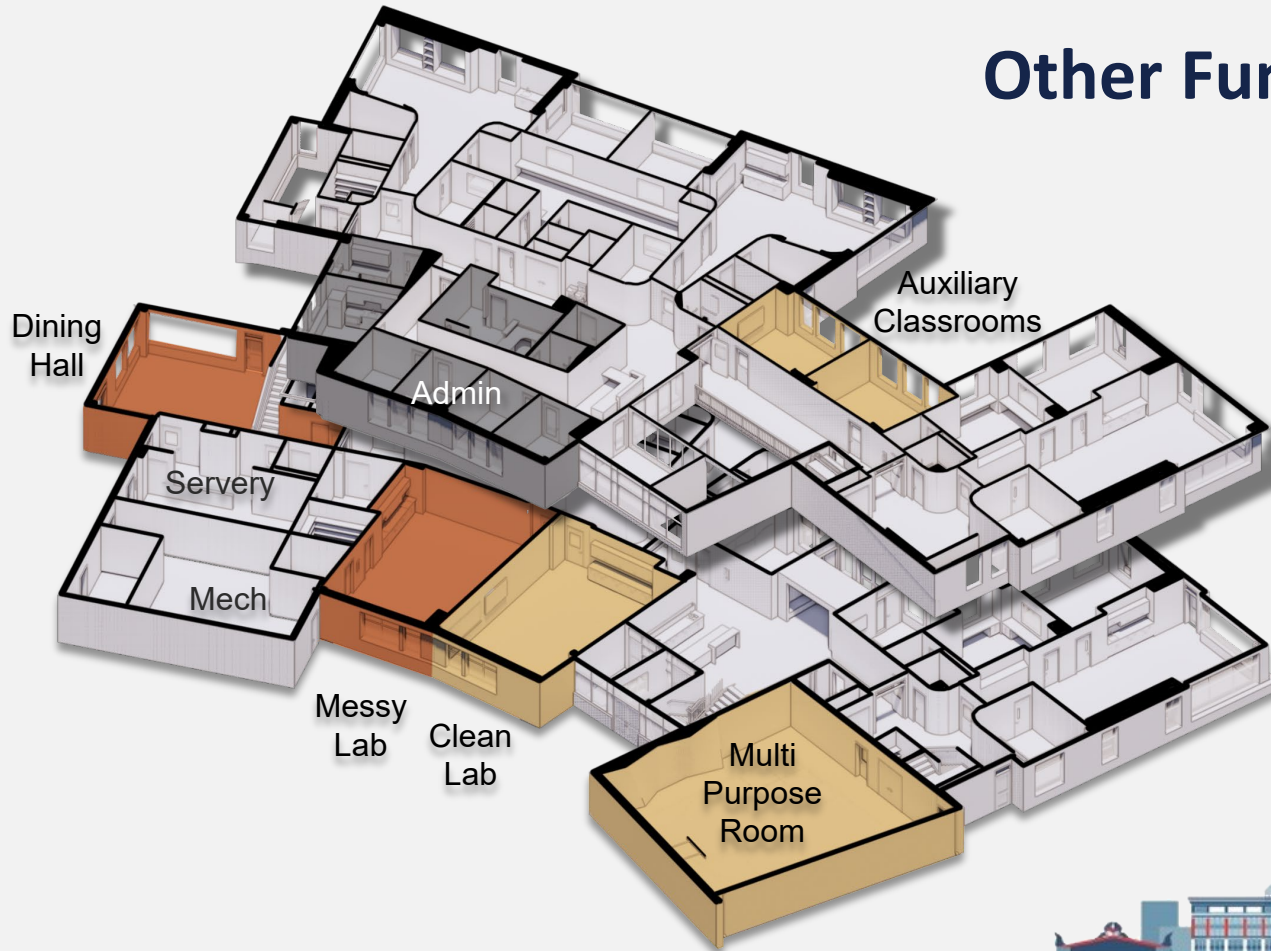


Transitional

- 1:10 student/staff ratio
- Blends into a standard classroom environment
- Counseling at 2-3 hours
- Return to core instruction throughout facility
- Lunch at dining hall

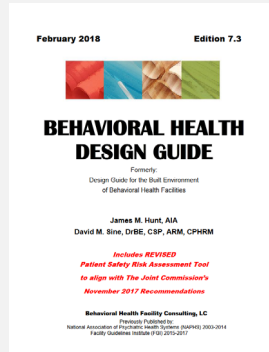
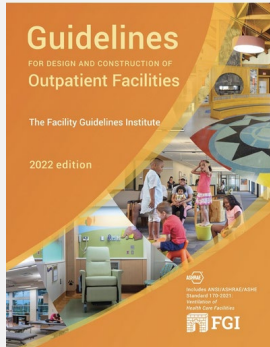


Other Functions



Ligature/Tamper-resistant design resources

- Behavioral Health Design Guide
- NY State Office of Mental Health Guidelines
- FGI Guidelines for Outpatient Facilities



There is no such thing as Anti-Ligature



Determining Risk Category Levels

STAFF WORK AREAS,
BUILDING SUPPORT
SPACES

HOMEBASE &
CLASSROOM AREAS,
HALLWAYS

FOCUS ROOMS, GROUP
THERAPY ROOMS

RESTROOMS

NO STUDENT
ACCESS

LEVEL I

LEVEL II

LEVEL III

STAFF ONLY

MODERATELY - HIGHLY
SUPERVISED

MINIMAL SUPERVISION

FULL PRIVACY





Level 1



Level 2



Level III

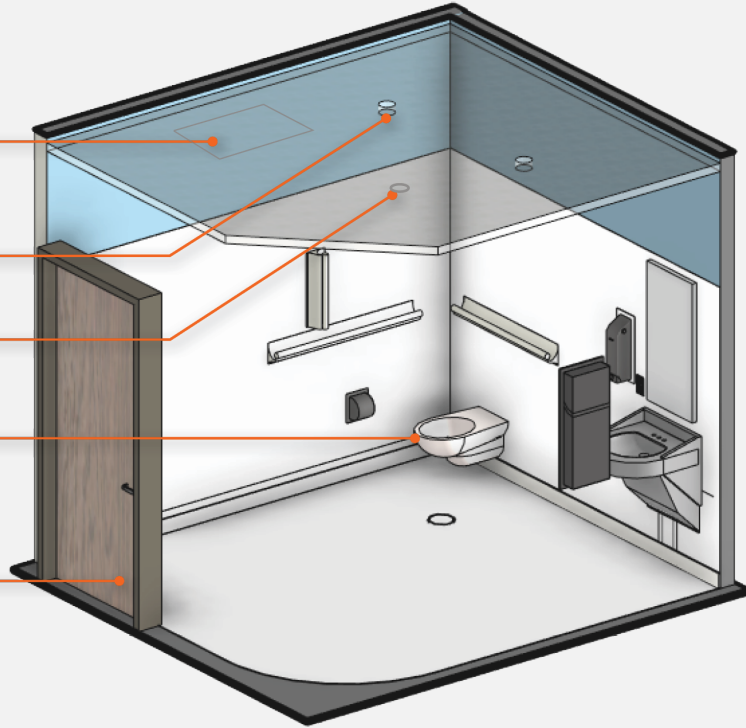
LIGATURE RESISTANT GRILLES WITH
TAMPER RESISTANT FASTENERS

RECESSED LIGHTING

LIGATURE RESISTANT FIRE
SPRINKLER HEADS

LIGATURE RESISTANT PLUMBING
FIXTURES AND TOILET
ACCESSORIES

CONTINUOUS HINGE WITH
RESCUE HARDWARE



Level II

LIGATURE RESISTANT GRILLES WITH
TAMPER RESISTANT FASTENERS

LIGATURE RESISTANT FIRE
SPRINKLER HEADS

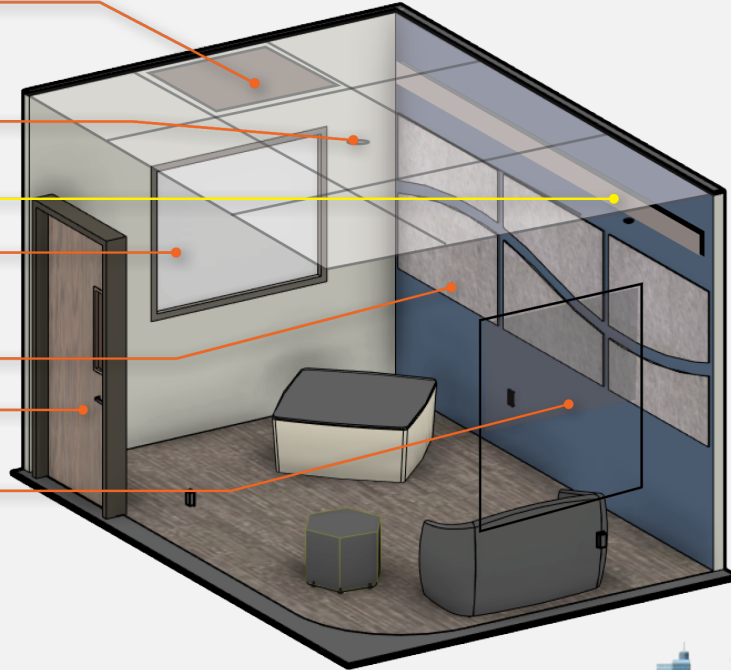
RGBW TUNABLE LIGHTING

ONE WAY OBSERVATION WINDOW
WITH PICK RESISTANT CAULK

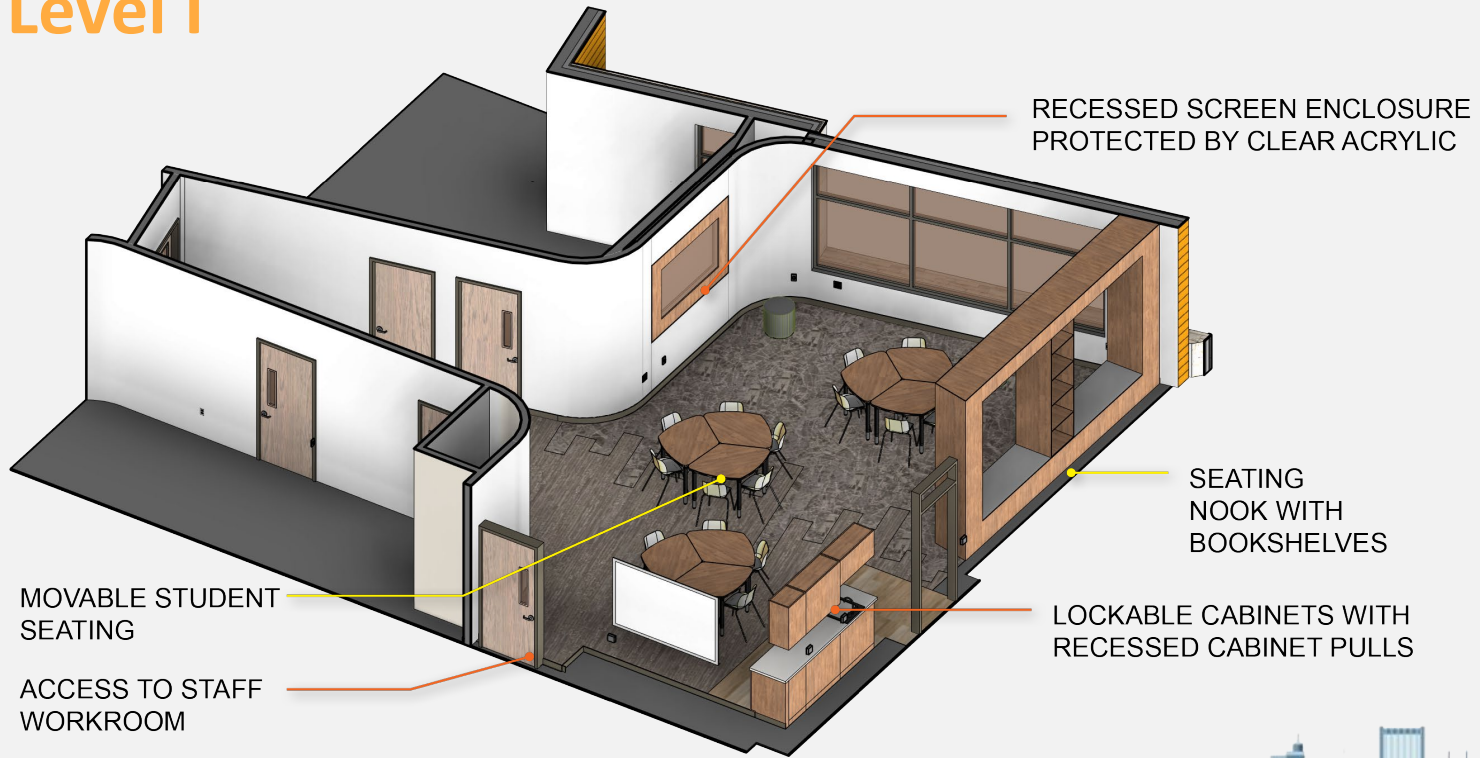
ACOUSTICAL PANELS

CONTINUOUS HINGE WITH RESCUE
HARDWARE AND A VISION PANEL

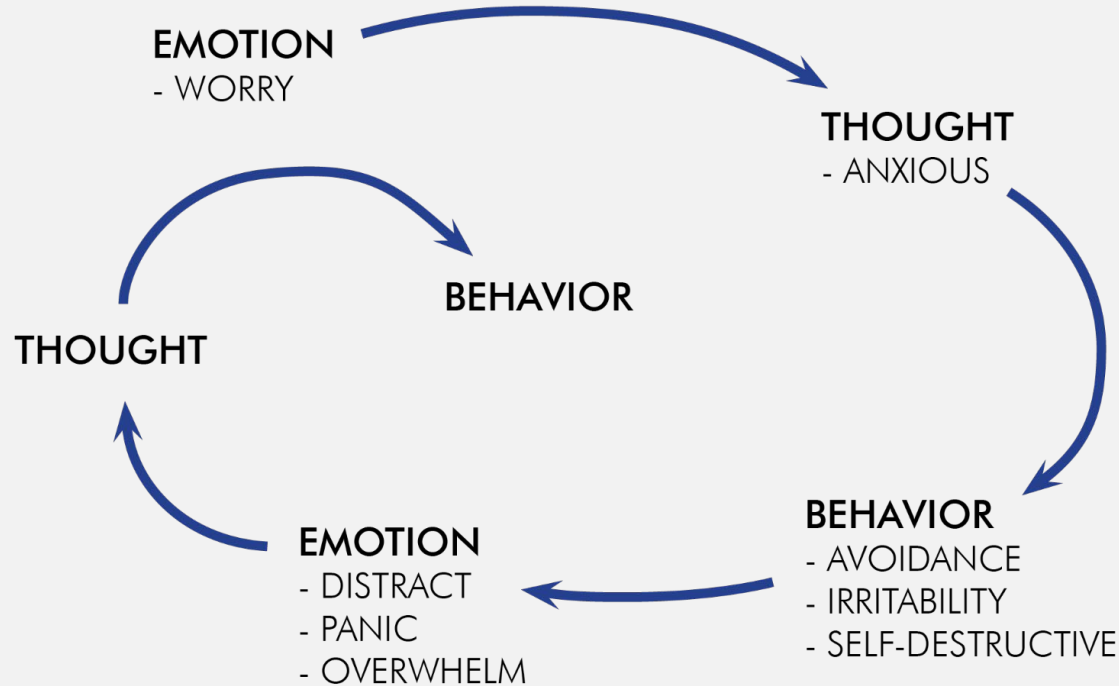
MOTORIZED CORDLESS SHADES
AT EXTERIOR WINDOWS



Level I

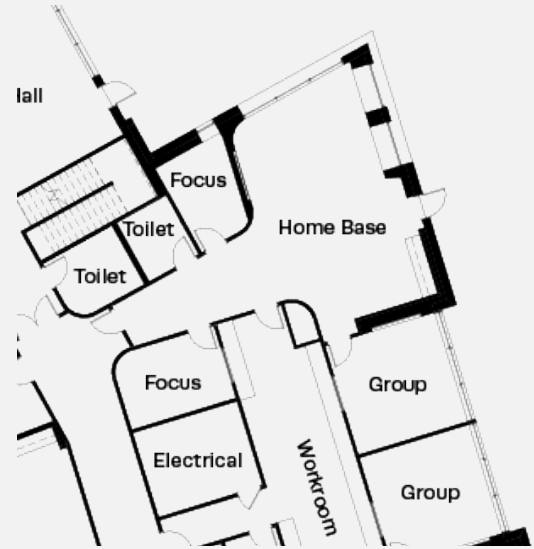
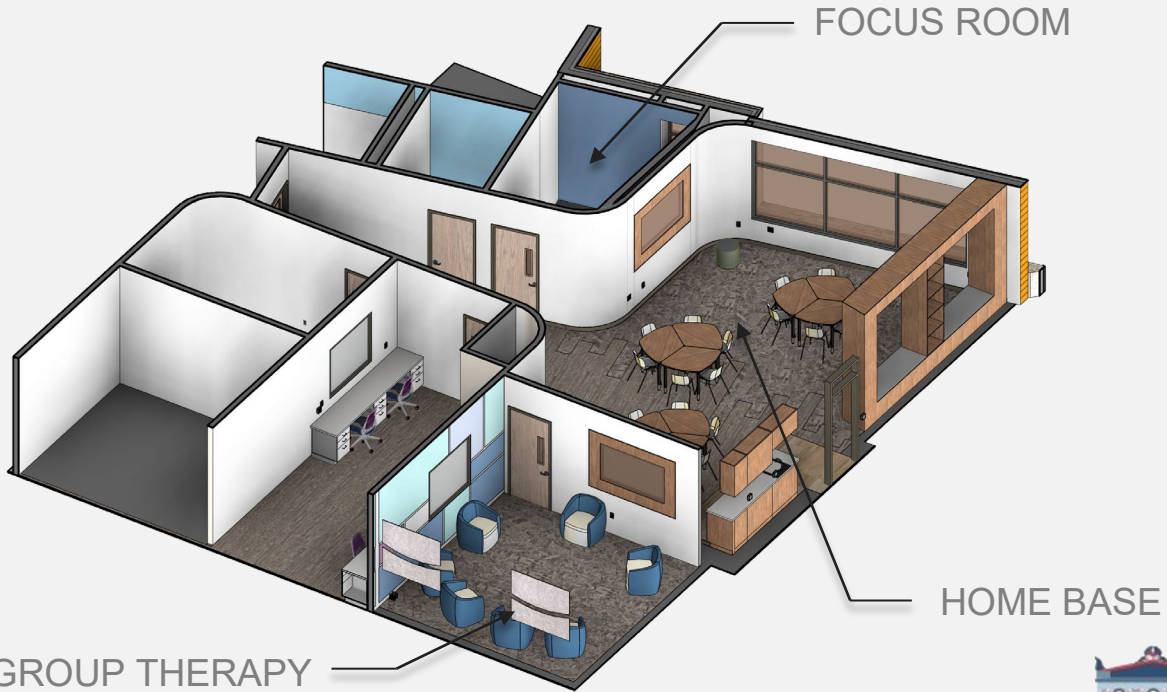


Breaking Negative Thought Spiral



Designing for Autonomy

- A sense of control, ability to choose your surroundings



Scale and surroundings

- Opportunities for alone time outside of pods
- Counseling in non-clinical settings

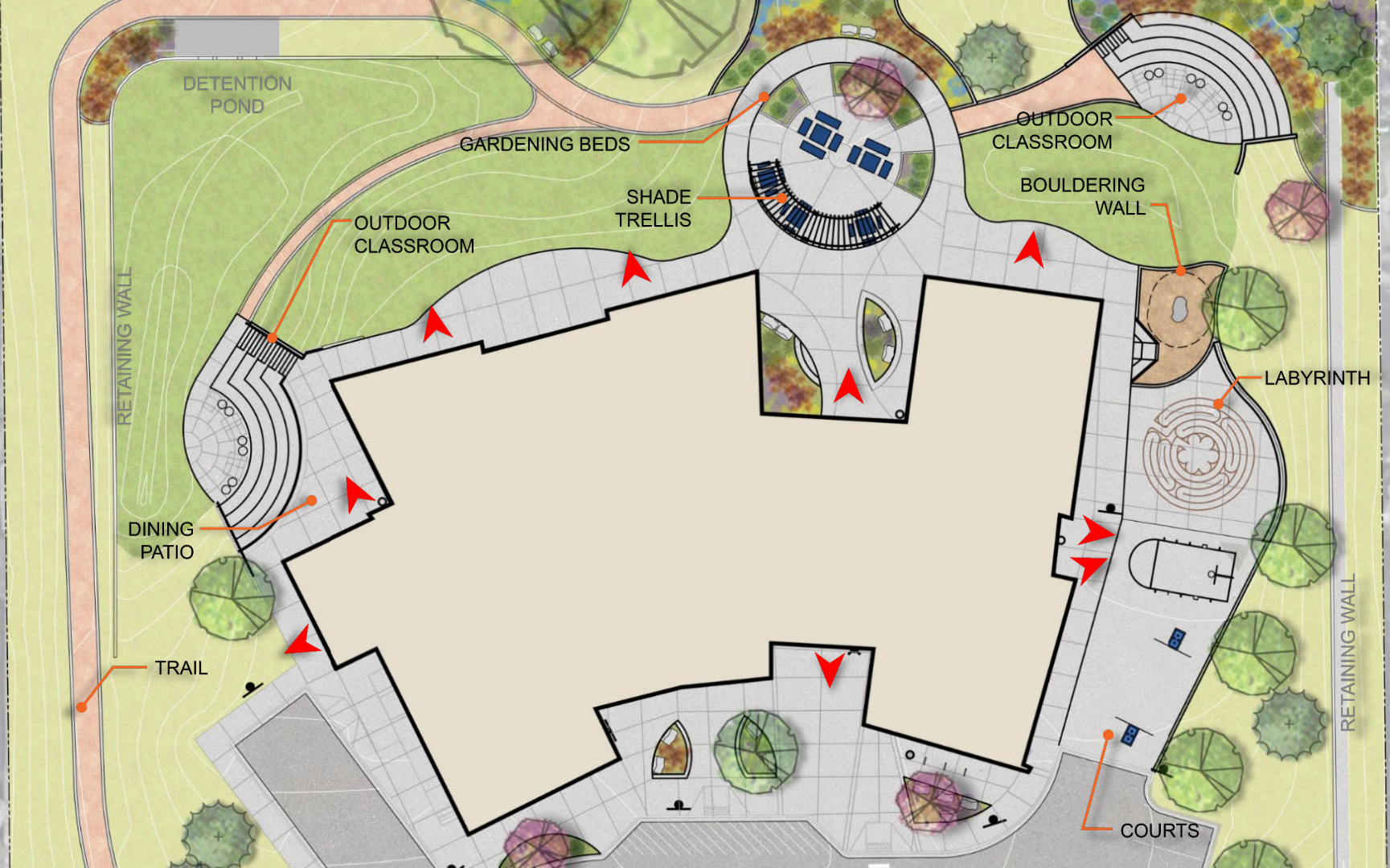




Access to the outside

- Each pod has direct access
- Additional points throughout the building





DETENTION POND

GARDENING BEDS

SHADE TRELLIS

OUTDOOR CLASSROOM

OUTDOOR CLASSROOM

BOULDERING WALL

RETAINING WALL

DINING PATIO

LABYRINTH

TRAIL

RETAINING WALL

COURTS

Evidence Based Design



Anxiety reducing elements



Materials: A Sense of Belonging



A sense of welcome





What we hope you got out of this

- There ARE creative solutions to this problem!
- There is no template out there.
- Any space can help break a negative thought pattern.



Contact Information

Tony Poole – TPoole@CherryCreekSchools.org

Katie Vander Putten – KVanderPutten@moaarch.com

Kasia Bulkowski – Kbulkowski@moaarch.com



ASSOCIATION FOR
**LEARNING
ENVIRONMENTS**

CHICAGO

LearningSCAPES 2023

THANK YOU!