

# Against the Current Career Academy

2023 LearningSCAPES  
October 15, 2023

*Umd<sup>n</sup>hd<sup>n</sup> Nation Public School*



Introductions



Wrap-Around  
Services



ACCA Program  
Implementation/  
Development



Next Steps





# Introductions



Stacie Hardy, Superintendent

Kari Bappe, Project Director ACE Grant/School Psychologist



Cleve Reeves, Principal Architect (BVH Architecture)

Matt Smith, AIA, NCARB, LEED AP (BVH Architecture)



**Redefining  
Success**

**Demographics**

**Video**



# Demographics

Population - 915

Ethnicity - 98.91% Native American



**H**ousehold  
**T**ype

**H**ousehold  
**I**ncome

**P**overty **R**ate

**P**opulation  
**P**yramid

**C**urrent  
**E**ducation  
**L**evel

**U**nemployment  
**R**ate



# Macy, Nebraska

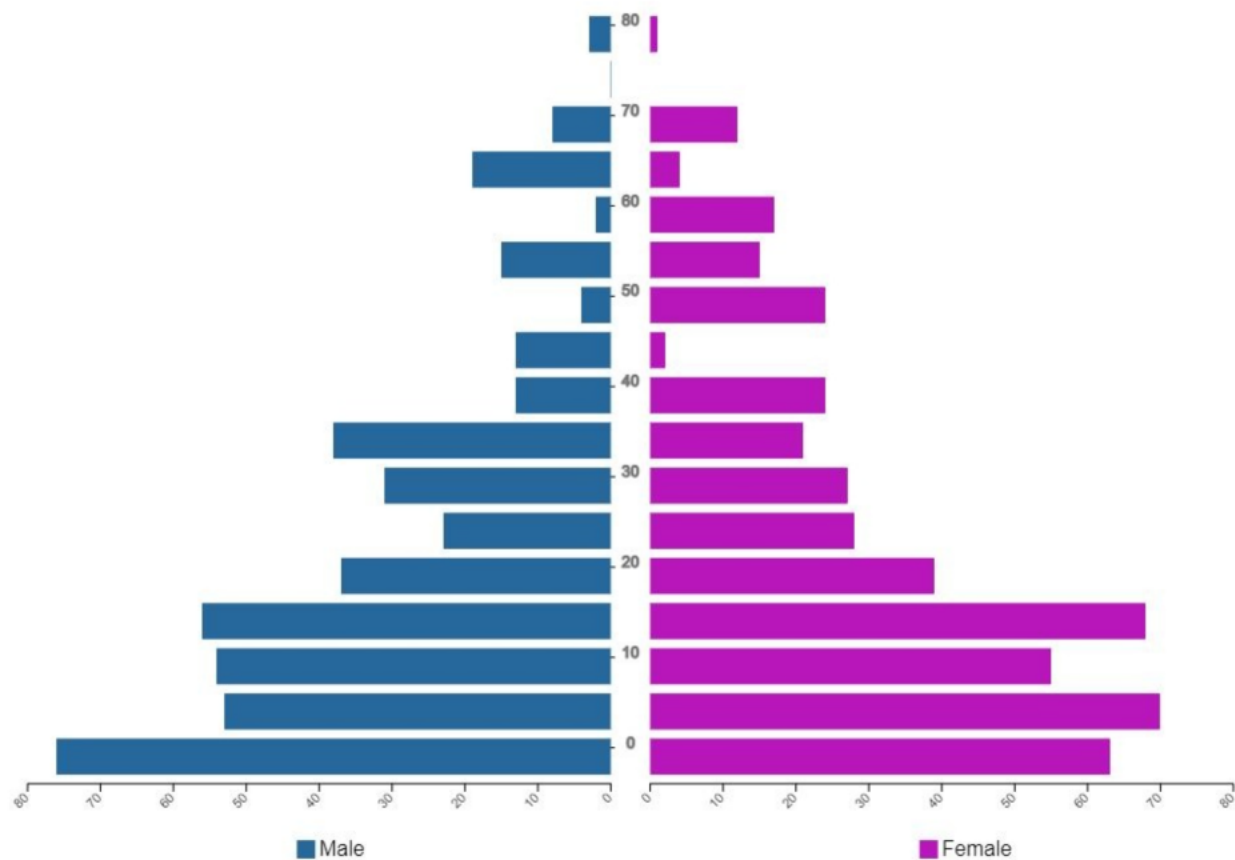








Macy Population Pyramid 2023



# Population Pyramid

## Macy Median Age

18 Total

17.7 Male

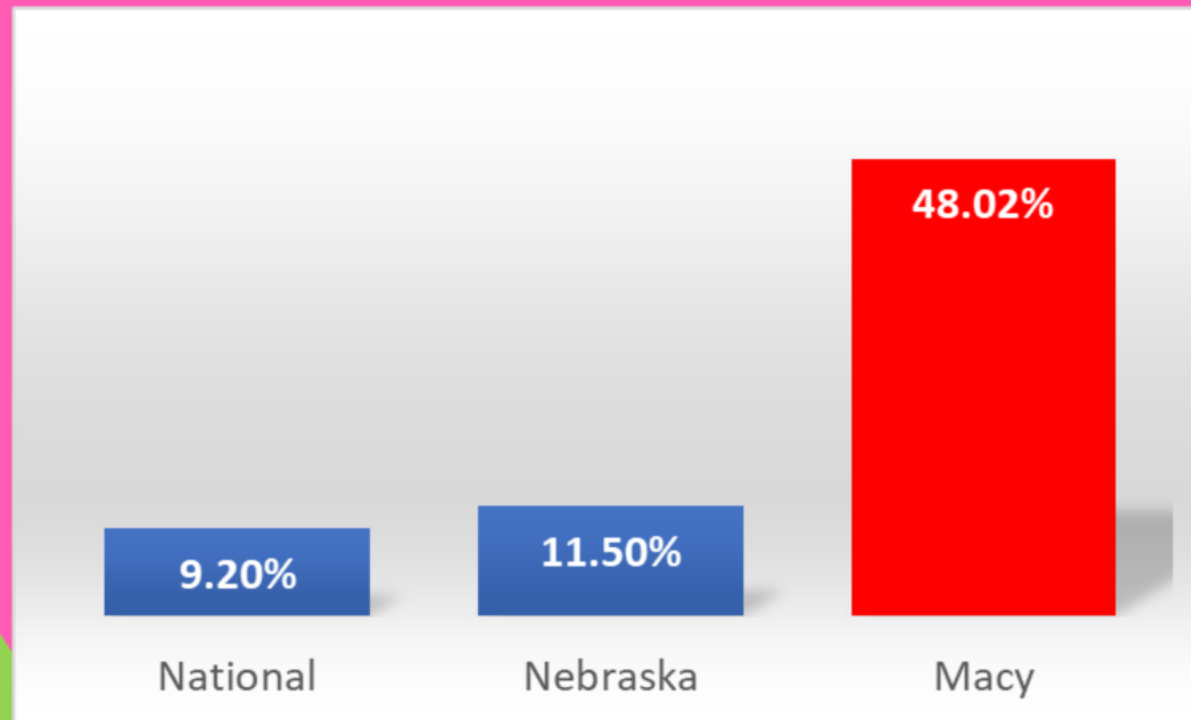
18.1 Female

## Macy Adults

There are 456 adults, (47 of whom are seniors) in Macy.

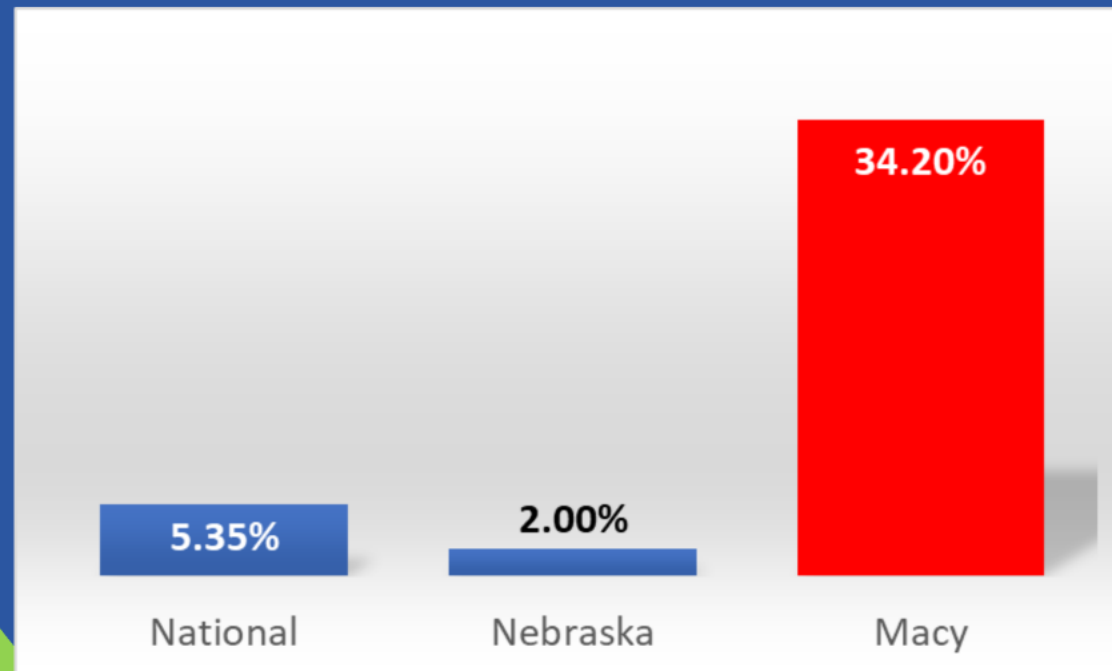


# Poverty Rate

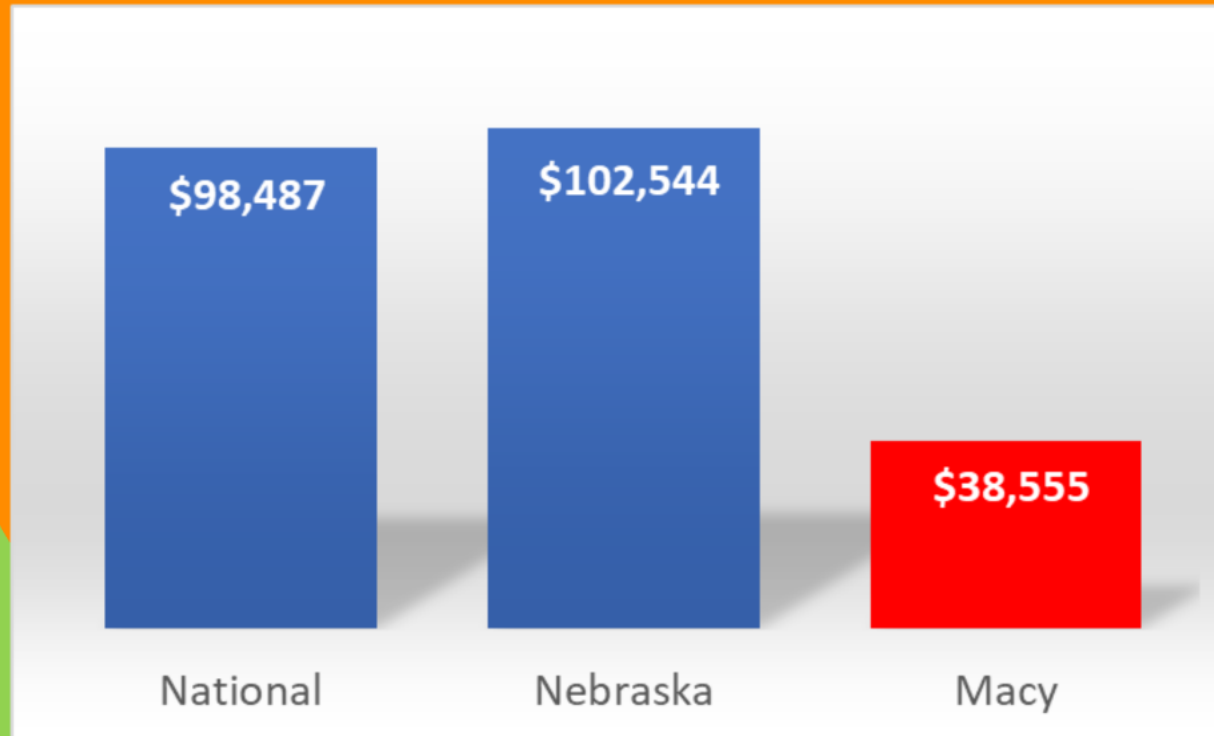




# Unemployment Rate

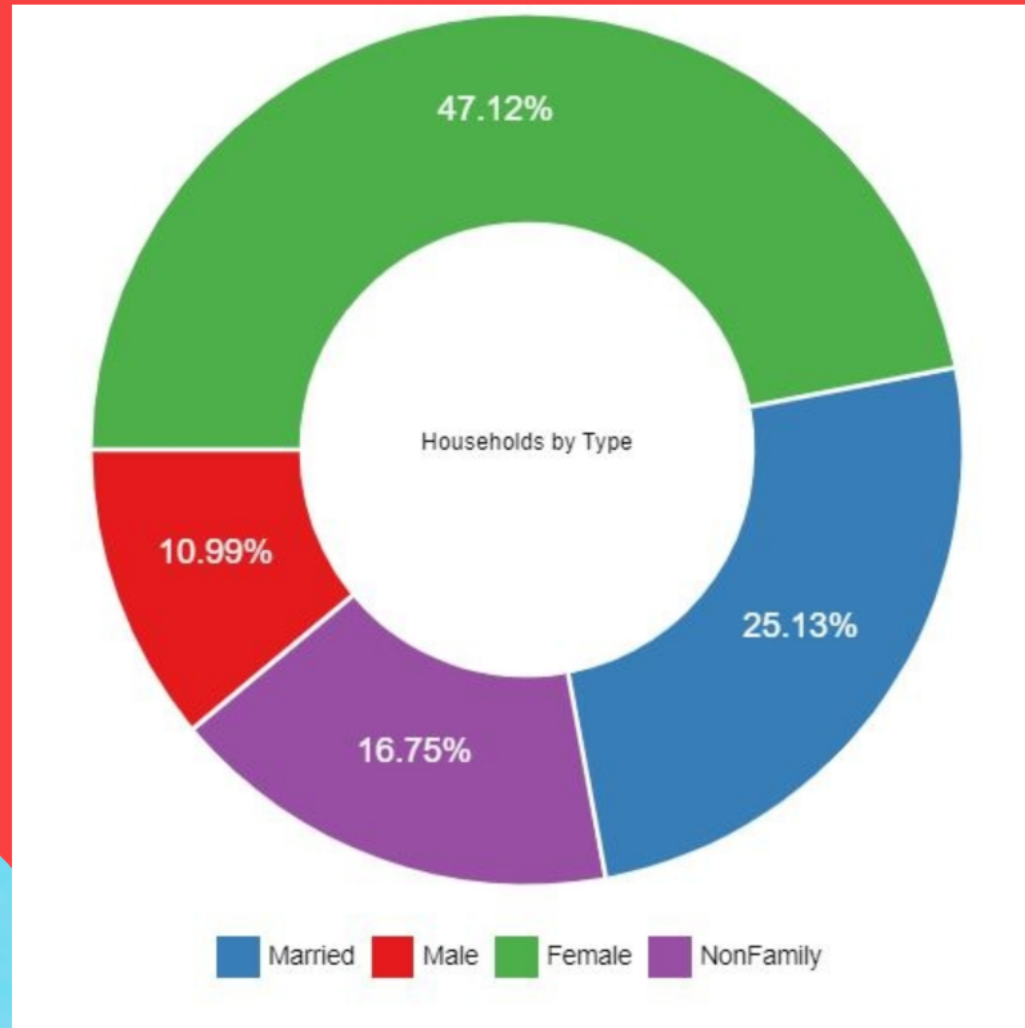


# Average Household Income

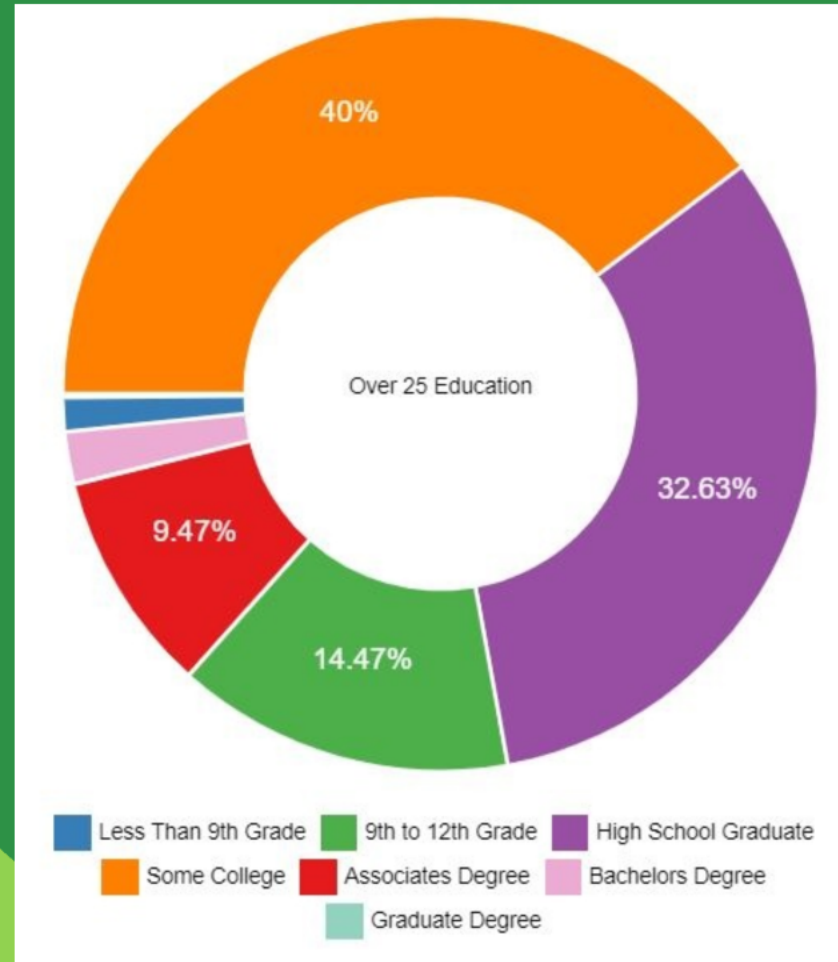




# Household Type



# Current Level of Education





# Redefining Success

- How to get increasing graduation rates to translate into corresponding increases in those seeking post-secondary education/vocational experiences.
- Of those who do go on to college, the majority of students drop out after two semesters.
- Battle the narrative that in order to be successful you have to leave the reservation.
- Creating opportunities for students to have a variety of career and vocational opportunities while being able to remain close to family and community.







**CTE** at  
**UNPS**

# Career Technical Education (**CTE**)

**B**enefits  
of **CTE**

The practice of teaching skills-based careers to students in middle school, high school, and post-secondary institutions.

**E**xploring  
**P**athways

**I**ndustry  
**C**ertifications

**D**ual-**C**redit



# Benefits of CTE

Career technical education (CTE) provides students and adults with the academic and technical skills, knowledge and training necessary to succeed in future careers and develop skills they will use throughout their careers.

## 5 Proven Benefits to CTE:

1. Exploration of Real Career Opportunities
2. Development of Career Skills.
3. Industry Credentials and Certifications
4. Improved Graduation Rates
5. Bridges to Future Education

CTE provides unique learning opportunities, college credit, industry certifications



# Exploring Pathways

Since the spring 2022, students have been offered 131 different site visits to expose them to a variety of occupations and help them narrow down and select a pathway of interest. For the 2023/2024 school year, we will offer similar opportunities.





# Against the Current Career Academy

is a progressive and modern approach to secondary education.

Six distinct career paths will be offered:

## Culinary

•The Culinary Department will work hand-in-hand with the café to provide fabulous food options to the community.



## Early Childhood

•This experience will pave the way into a career into the field of education and childcare and provide a much needed resource for the community.

## Entrepreneurial

•This career path will partner with the newly developed Chief Store where students will learn to identify opportunities, solve problems, build business strategies, test and validate assumptions, and execute ideas.



## Construction

•Today, hands-on trades demand more technical skills working with sophisticated equipment and often taking the future of the planet into consideration as well



## Automotive

•Students will learn inside our auto shops and body shop garages where they'll train on engines, fuel and emission systems, electrical systems, transmissions and more.



*Each pathway is matched with the Nebraska standards and will allow students to earn dual credits and vocational certificates.*



## Nursing

•Students can start on the road toward a future in nursing, medical assisting, coding and billing, massage therapy and more.



Nursing

Culinary

Construction

Early Childhood

Automotive

Entrepreneurial



# Nursing





MÓ"HI"TU TU  
*Bluestem*  
COFFEE HOUSE & CAFE

# Culinary





# Construction



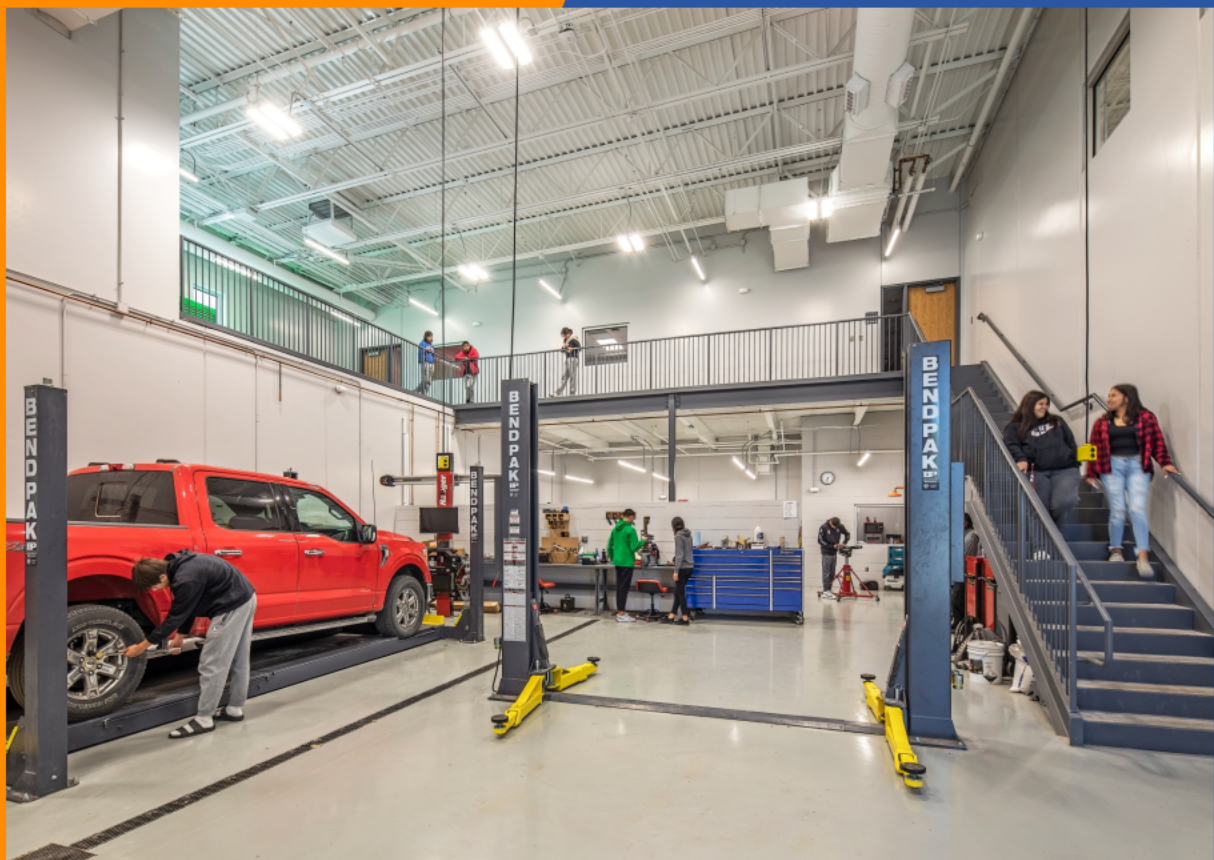


# Early Childhood





# Automotive



# Entrepreneurial





# Partnership With **NICC**

- In partnership with Nebraska Indian Community College (NICC), students are offered dual-credit courses.
- UNPS currently has 16 eligible courses.



**Dual-Credits  
Offered**

# Dual-Credits Offered

Exploratory Mechanics  
Personal Finance  
Introduction to Entrepreneurship  
Nurse Aide  
First Aid/CPR  
Auto Diagnosis, Service and Repair  
Drawing  
Intro to Welding  
Practical Carpentry I  
Fundamentals of Carpentry  
Construction Safety/OSHA  
Intro to Psychology  
Graphic Design  
Intro to Presentation Software  
Intro to Word Processing  
Expressive Arts

# Industry Certifications

**The # of UNPS students that have received Industry Certificatoins:**

---

CNA - 22

Med-Aide - 5

OSHA Certified - 7

Pro-cut Rotor Matching Master Technician Certification - 7

Shopkey Pro Service Information Level 1 and 2 Certification - 7

Battery Maintenance and Engine starting Certification - 7

Tape and Rule Measurement Certification - 7

Battery, Starting, & Charging System Diagnostic Certification level 1 and 2 - 7

Battery Charging Certification - 7



NEBRASKA

Good Life. Great Connections.

Department of Labor

United Way



Omaha Tribe of Nebraska

Morningstar Counseling



Farm to School Program

# Wrap-Around Services



Kiewit Luminarium



Institute of Agriculture and Natural Resources

NEBRASKA EXTENSION

**F**ood  
**S**overeignty



**C**onnections

**Á**shita théwathe!

'Let's **G**o  
**O**utside!'

**V**ocational  
**O**ppotunities

Our 7-Acre Farm is guided by farming and transition specialists along with culture teachers. This program blends traditional and modern farming practices to raise a large variety of organic fruits, vegetables, and traditional Indian corn. This farm provided over 6000 pounds of fresh produce that was supplied to the community of Macy via the school cafeteria, culinary pathway, Bluestem Coffee House and Café, Senior Center and local Farmer's Markets.

**F**ood

**S**overeignty

**F**ood  
**I**nsecurity

**F**ood  
**A**ccessibility

**F**ood  
**S**overeignty

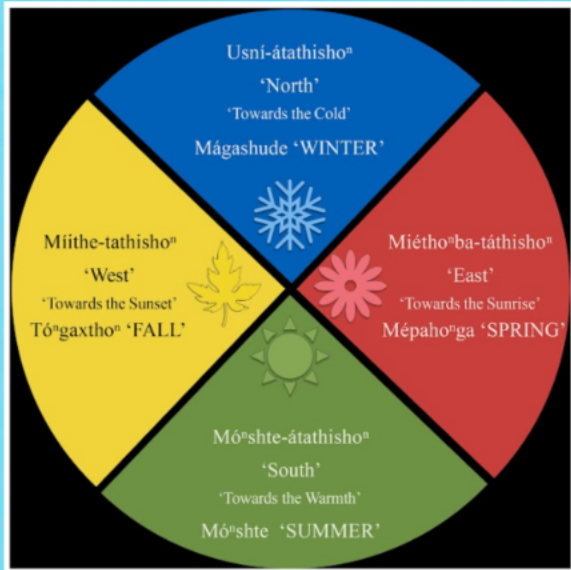


**Food Sovereignty-** Through colonization, the Omaha Tribe was resettled on reservation land and hence lost many of their traditional farming practices. Their diet was replaced with processed commodities that were not easily digested, leading to disproportionate rates of obesity and diabetes, as well as, a strong reliance on outside food sources.

**Food Insecurity-** 100% of UNPS students qualify for free and reduced lunch. The school provides free breakfast and lunch year-round to address the major concern of food insecurity. Food packets are distributed each day upon dismissal.



**Food Accessibility**-The village of Macy has been declared a Food Desert by the USDA. The village is located 30 miles from any full-scale grocer and many residents lack reliable transportation. The only food source in the village is a small convenience store stocked with snack foods.



# Áshita théwathe! 'Let's Go Outside!'

Is a unique approach to teaching the natural sciences through the cultural lens. This program is co-taught with a doctoral Naturalist and an Omaha Culture Teacher, teaching students K-8 standards-based science lessons, land stewardship, storytelling, and traditional Omaha ceremony in a beautiful outdoor space. Includes:

- o Tizhinga Wagonza (Little House of Learning) Log Cabin
- o Medicinal flower beds
- o Geothermal greenhouse
- o Heirloom corn beds





# Vocational Opportunities

Nebraska  
Department of  
Labor

Farm to School  
Program

Skills USA

Nebraska Department  
of Vocational  
Rehabilitation

Jobs for American  
Graduates - JAG

# Jobs for American Graduates - JAG





Nebraska

Department of Labor



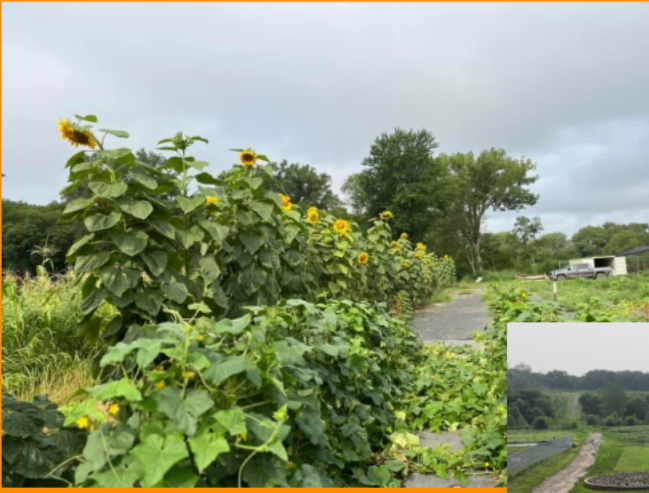


Nebraska  
Department of  
Vocational  
Rehabilitation





# 3 Sisters Farm to School Program





# Skills USA

This year we plan to have 18 students participate in Skills USA. The goal is to have them participate in:

- Visual Arts
- Advertisement
- Speech
- Early Childhood
- Culinary
- Baking
- Automotive
- CPR
- First Aid
- Medical Terminology
- Quiz Bowl.



# Connections

**S**chool  
**C**afeteria

**C**ulinary  
**P**athway

**E**ntrepreneurial  
**P**athway

**219**th **A**nnual  
**H**edewachi **H**arvest  
**C**elebration

**F**armers  
**M**arket



# Farmers Market





# Culinary Pathway

Supplies produce to the ACCA Culinary Pathway and school-sponsored Bluestem Coffee House and Café.





# 219th Annual Hedewachi Harvest Celebration

Students have reclaimed many of their traditional ceremonies, recipes, lingual greetings, and family origins. They prepared and served a community meal to over 500 people at the 219th Annual Hedewachi Harvest Celebration.







# Entrepreneurial Pathway

Students help create logos, marketing plan, and business structure for local farmers markets and distribution of student-made goods.



# School Cafeteria

The School District is able to purchase produce from our farm to school program to use in the school cafeteria and salad bar.



# Kiewit Luminarium

- Newly opened 100 million dollar STEM Center on the riverfront of Omaha, Nebraska.
- Permanent display highlighting the UNPS Farm to School Program
- Portrays our young, ambitious, indigenous students in a positive light





UMORION  
NATION JAG  
FARMERS MARKET



# Next Steps

**R**ecreational  
**C**omplex

Development of partnerships with area native schools allowing them to contract students to access the Against the Current Career Academy. This will allow invaluable opportunities for area native youth and contribute to the sustainability of the ACCA.

**3 S**isters  
**P**rocessing  
**C**enter

## 3 Sisters Processing Center

3 Sisters Processing Center- a 11,000 square foot processing center to store, clean, and process fresh produce allowing UNPS to offer a variety of goods to Omaha people year round. By having the space and equipment to dehydrate, freeze, can, juice, and package farm produce will eliminate food waste and lend to food sustainability.





# Recreational Complex

Recreational Complex- Phase II will include the addition of a baseball field, track and field events and sand volleyball courts for the community to enjoy to promote healthy wellness and leisure activities.



Walking  
Trail

Pump  
Track



# Walking Trail





# Pump Track











Questions

# Against the Current Career Academy

2023 LearningSCAPES  
October 15, 2023

*Umd<sup>n</sup>hd<sup>n</sup> Nation Public School*



Introductions



Wrap-Around  
Services



ACCA Program  
Implementation/  
Development



Next Steps

