

ASSOCIATION FOR  
**LEARNING  
ENVIRONMENTS**

**CHICAGO**

**LearningSCAPES 2023**

BRIAN REGAN  
APRIL 7



# Security Considerations for Building Design

By Ryan Searles

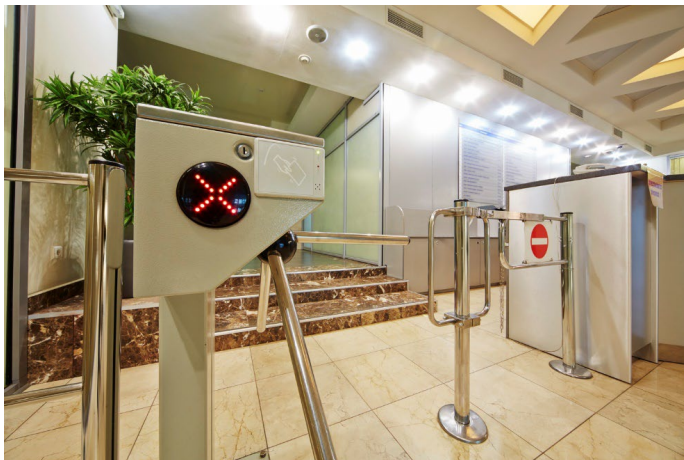
# Ryan Searles

- Senior Consultant Security Assessment and Protective Services
- 19 years of experience
- US Army Veteran
- DHS Threat, Vulnerability, and Risk Assessment Certified
- DHS/FEMA Sporting Event and Large Venue Risk Management Certified
- DHS Critical Infrastructure Risk Management Certified





# What is physical security design?



- The design of effective physical security systems requires a methodological approach
- An effective physical security system that integrates people, procedures, and technology for protection of assets against theft, sabotage, and malicious human attacks
- What does this mean?



# Assessment work

- Threat
  - Known vs. unknown
- Vulnerability/gap – where are they/what are they?
- Threat x Vulnerability x Consequence = Risk



# Market trends

- More firms are getting consultants involved earlier
- People are considering safer building designs because of shootings, terrorist events, civil unrest, and other emergencies that are becoming more prevalent



# Market differences

- Not all buildings are the same
- Education vs. Healthcare, etc.



# It starts with an outside approach

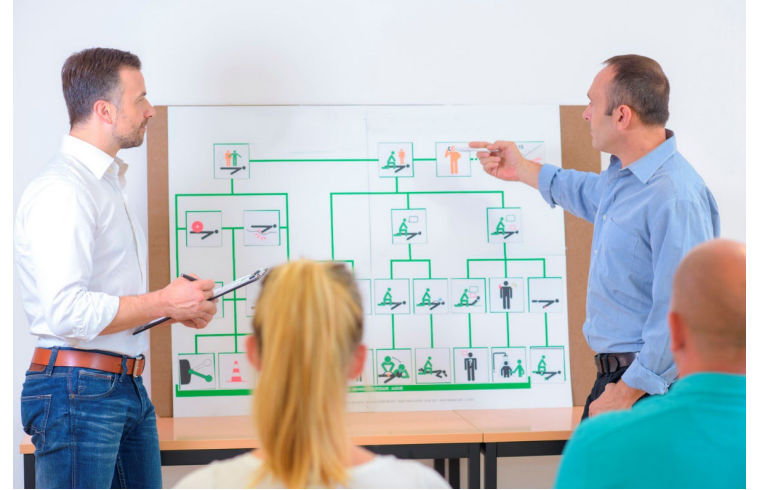
- Always start with the perimeter and property line
- Think of a filter, what percentage of issues can we mitigate before it even gets to us? How do we accomplish this?
- This isn't just fencing
  - Environment, lighting, parking lots, signage, checkpoints, etc.
- Inside
  - Vestibules, front desk design, technologies that can help prevent and respond





# Starting early in the design phase

- Cost
- Cohesive systems
- Ability to adjust



# Don't lose the beauty of the building

- The building has a purpose and design, it is up to us to work with that
- Although we want to maintain the building aesthetics, life safety must always be the number one mission
- If we design a beautiful building that is dangerous and something happens, does that tarnish our brand?



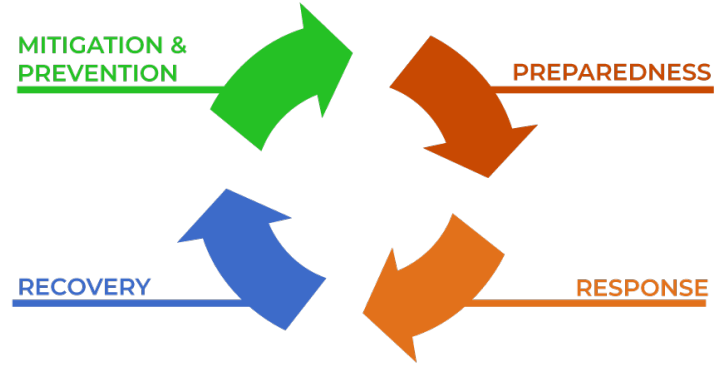
# Systems to consider

- Fencing – Cons and Pros
  - Castle Model
- Lighting
- Cameras
- Access control
- Mass communication
- Gunshot detection
- Etc.



# Things to mitigate events

- Prevention
- Response
- Post Event



# Other things to consider for clients

- Training
- Policy and procedure
- Crisis management teams





- Our responsibility is the safety and security of our clients
- Having specialized security consultants, can really set you apart as the firm that is making the difference



# Questions?

## Contact

Ryan Searles  
Senior Consultant Security  
Assessment and Protective Services  
(210) 570-7894  
[ryan.t.Searles@imegcorp.com](mailto:ryan.t.Searles@imegcorp.com)



ASSOCIATION FOR  
**LEARNING  
ENVIRONMENTS**

**CHICAGO**

LearningSCAPES 2023

THANK YOU!