

ASSOCIATION FOR
**LEARNING
ENVIRONMENTS**

CHICAGO

LearningSCAPES 2023

BRIAN REGAN
APRIL 7

Prioritizing Student Health

Introductions



Julia Eiko Hawkinson

AIA, ALEP, LEED AP BD+C, O+M, WELL AP

Senior Facilities Development Manager
Los Angeles Unified School District



Kirstyn Bonneau

AIA, NCARB, LEED AP

Partner
PBWS Architects



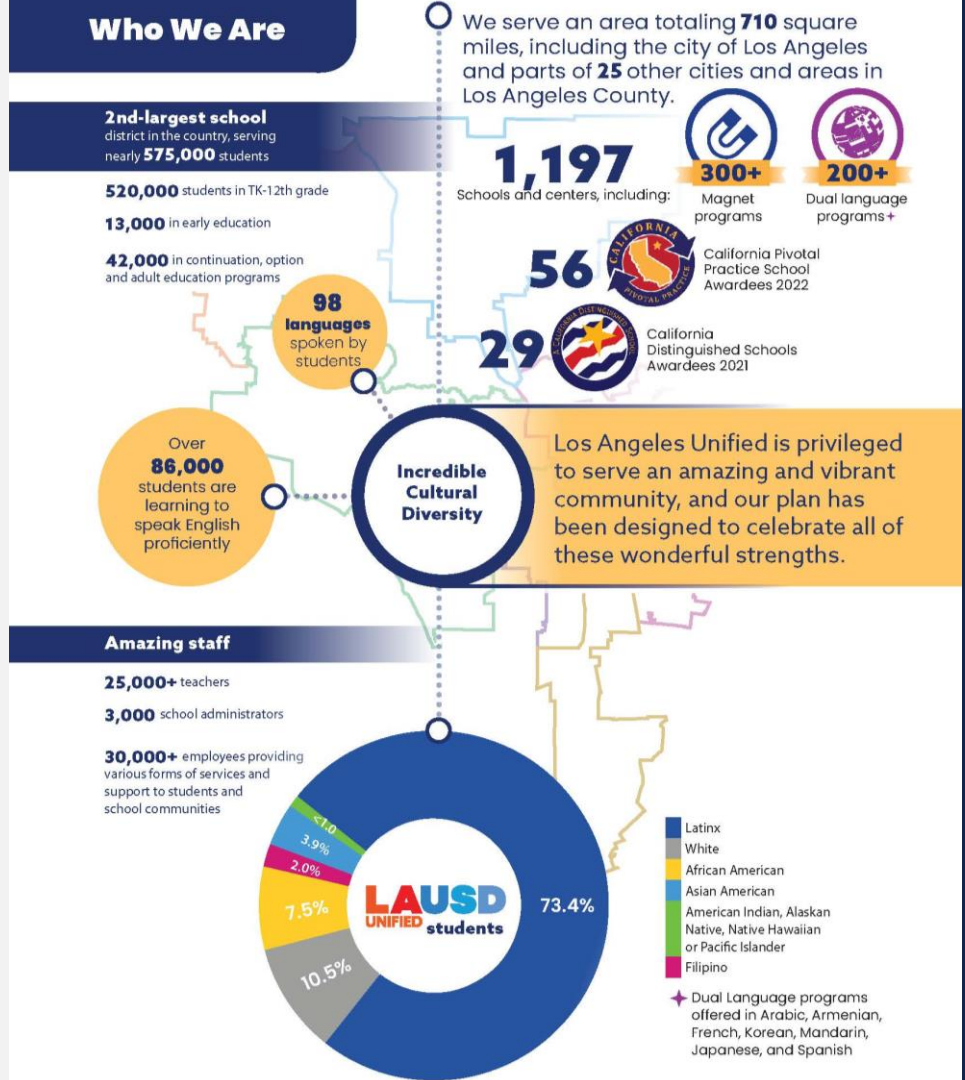
Osleide Walker

Associate – Senior Project Designer
Arcadis

Learning Objectives

- Participants will understand how providing **school-based wellness and health services** contribute to a positive school environment that supports students and their learning and development.
- Participants will gain knowledge of the value of **biophilic design** in wellness settings and how biophilia can be incorporated into the wellness facilities design.
- Participants will gain knowledge regarding the **planning and design requirements** for a successful school-based wellness clinic that considers community access, privacy, a healing environment, and operational efficiency.
- Participants will understand how health risk indicators, access to health services, and identification of partnerships may inform the **identification of locations** for wellness services.

About Los Angeles Unified



Who we are

- Median Household income \$66,539
- English and 97 languages are spoken in LA Unified Schools
 - 6,081 are English-language learners
- Approximately 9,000 students experiencing homelessness identified (January 2022)
- Serve over 680,000 meals a day
 - Over 81% of our students qualify for free or reduced-price meals
 - From March 2020 to April 2021 we provided children and adults with 123,232,019 meals through Grab & Go Food Centers



BALBOA MENTAL HEALTH CENTER
FRONT ENTRANCE / OUTDOOR WAITING AREA

Why we do this

LA Unified is committed to serving the whole child.

- When students are **healthy in mind and body**, they are more engaged, miss less school, focus better in class and are more likely to graduate.
- Receiving school-based comprehensive health services has been shown to **reduce course failures and dropout rates**.



BALBOA MENTAL HEALTH CENTER
WAITING AREA LOOKING TOWARD RECEPTION / OUTDOOR AREA

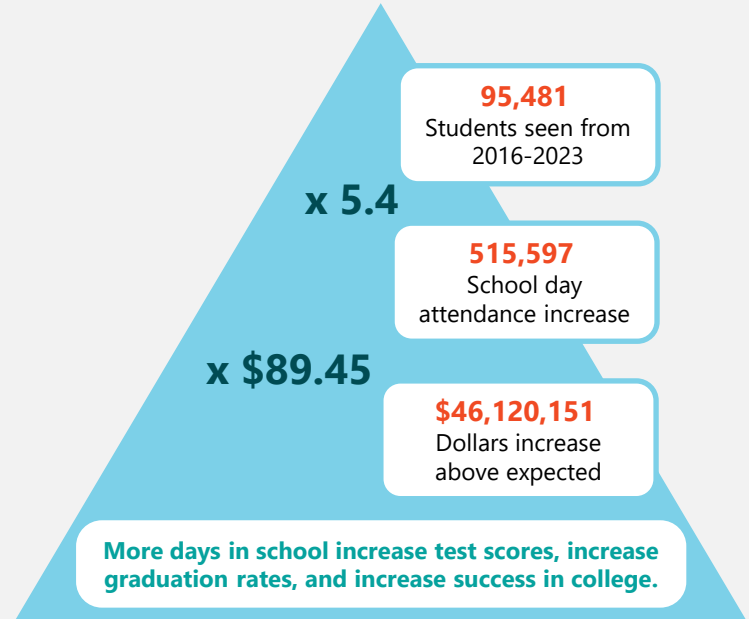
Improved Attendance

After the first visit to a school-based health center, the proportion of full days present increased over time.

Students' attendance increased by **5.4 school days** per year following any type of visit to a school-based health center.

Students' attendance increased by **7 school days** per year after a school-based health center visit for a mental health diagnosis

Lim, C., et al. School Attendance Following Receipt of Care From a School-Based Health Center. J. of Adol. Health. Sept 12, 2023.



Site Selection

- Need Analysis
 - Identify high need areas
 - Assess health, economic, and neighborhood factors
- Resource Analysis
 - Assess existing services
 - Avoid duplication of services
- Capacity Analysis
 - Campus site availability
 - Ease of access



MACLAY MIDDLE SCHOOL WELLNESS CENTER
WAYFINDING / PEDESTRIAN WALK TO FRONT ENTRANCE

Background - Wellness Centers

LA Unified is proud to host nineteen (19) Wellness Centers on school campuses throughout the District.

What is a Wellness Center?

Comprehensive health care: Physical health; Mental health; Dental health; Youth engagement, health education and career pathways

Open to families and school community: Separate entrances/waiting

Wellness Centers seek to address barriers to health and learning by providing services to students (from the campus and surrounding schools), as well as family and community members.



BALBOA MENTAL HEALTH CENTER
MEDICAL EXAM ROOM

Background - Wellness Centers

Partnerships with community clinics and non-profit providers to offer services that District is unable to provide (e.g.- dental).

School-based services: Convenient, trusted care without leaving school campus. Serves students, families, and communities.

Focus on prevention, education, early intervention, and screening by connecting, leveraging, and building by collaborating with onsite partners and school teams.

Support student holistic wellness and achievement.

Average Number of Students Served:

2016: 649

2022: 1577

Average Number of non-students Served:

2016: 1633

2022: 5803

LAUSD WELLNESS CENTER

- Student & Family
- Staff
- Community



REGION NORTH



North Hills Wellness Center
(at James Monroe High School)



Maclay Wellness Center



Balboa Wellness Center

REGION EAST



Elizabeth Learning Center



Gage Middle School



Garfield High School



Maywood Center for Enriched Studies



Sylvia Mendez Wellness Center



Belmont High School



Jefferson High School



Santee Wellness Center

REGION SOUTH



Carson High School



Locke Wellness Center



Fremont High School



Crenshaw High School



Washington Prep Wellness Center

Hyde Park / YES Academy

REGION WEST



Hollywood High School

Timeline



Guidelines for Development

General Guiding Principles for Wellness Centers

- Provide a positive experience for patients/students, family members, visitors, and staff.
- Design a wellness-oriented healing environment.
- Provide operational efficiency.
- Promote integration and collaboration.
- Plan for flexibility.



MACLAY MIDDLE SCHOOL WELLNESS CENTER
DENTAL EXAM ROOM

General Guiding Principles for Wellness Centers

Provide a positive experience for patients/students, family members, visitors, and staff.

- **Easy access**
- **Clear way-finding**
- **Patient-centered care**
- **Services to the patient**
- **Less time waiting**
- **Privacy/confidentiality**
- **Family accommodations**
- **Enhanced care coordination**
- **Advanced technology**
- **Healing environment**



BALBOA MENTAL HEALTH CENTER
MEDICAL EXAM ROOM

General Guiding Principles for Wellness Centers

Design a wellness-oriented healing environment.

- **Connection to nature (light & views)**
- **Outdoor space/garden**
- **Evidence-based design**
- **Stress reductions (noise, lighting, disorder, congestion, etc.)**
- **Positive distractions**
- **Comforting interiors (colors and materials)**
- **Enhanced privacy**
- **Patient choice/control**
- **Safety/infection control**
- **Warm material palettes**
- **Green/sustainable building**



HOLMES ELEMENTARY SCHOOL
RECEPTION / WAITING AREA

General Guiding Principles for Wellness Centers

Provide operational efficiency.

- **Optimizing staff & flow**
- **Enhancing productivity**
- **Lean operations (reduce waste, streamline processes)**
- **Eliminating duplication**
- **Improving communication**
- **Point of use supplies/workspaces**
- **Using advanced IT systems**
- **Reducing cycle times**
- **Building efficiency**



SANTEE HIGH SCHOOL
MEDICAL EXAM ROOM

General Guiding Principles for Wellness Centers

Promote integration and collaboration.

- **Integrated team areas to bring providers, medical assistants, & nurses together**
- **Shared spaces.**



General Guiding Principles for Wellness Centers

Plan for flexibility.

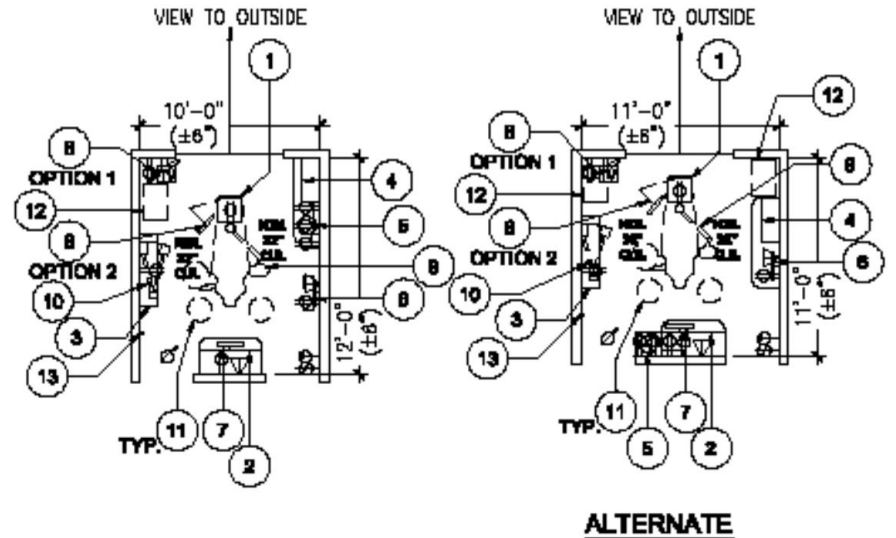
- **Physical & operational flexibility (ability to change the environment and care delivery if needed)**
- **Universal/multi-use spaces**
- **Standardization**
- **Sharing services/spaces**
- **Co-locating services.**



SANTEE HIGH SCHOOL
RECEPTION / WAITING AREA

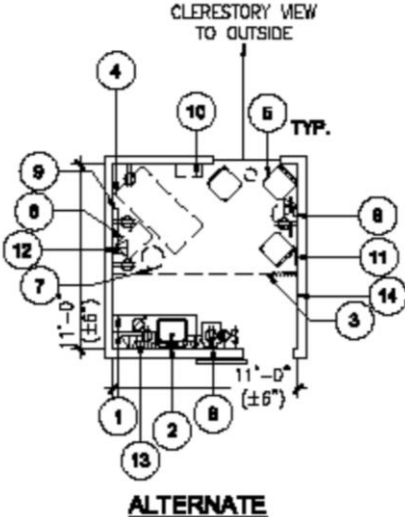
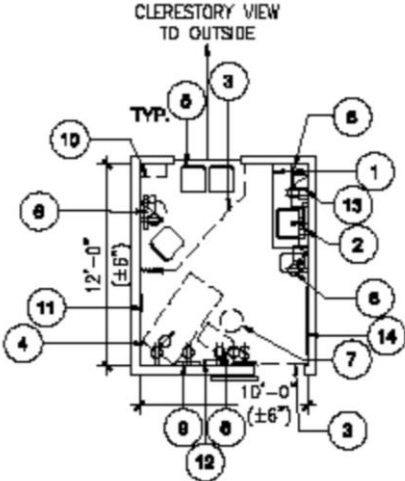
Room Templates

Dental Clinic – Dental
Treatment Space



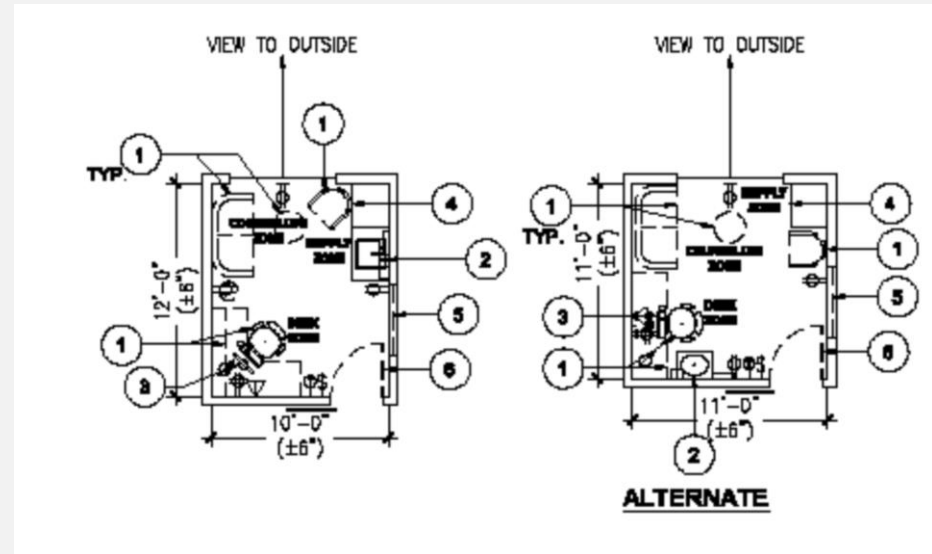
Room Templates

Medical Clinic – Exam Room



Room Templates

Behavioral Health – Counseling Room



Biophilic Design

Room Name	Patterns of Biophilic Design													
	1 - Visual Connection with Nature	2 - Non-Visual Connection with Nature	3 - Non-Rhythmic Sensory Stimuli	4 - Thermal & Airflow Variability	5 - Presence of Water	6 - Dynamic & Diffuse Light	7 - Connection with Natural Systems	8 - Biomorphic Forms & Patterns	9 - Material Connection with Nature	10 - Complexity & Order	11 - Prospect	12 - Refuge	13 - Mystery	14 - Risk/Peril
Exam Room	X	D	D	X			X	X	X		D	D	X	
Exam Room (ADA)	X	D	D	X			X	X	X		D	D	X	
Exam Room, Airborne Infection Isolation (ADA)	X	D	D	X			X	X	X		D	D	X	
Care Team Workarea/Nurse Station														
Workstation, Provider		D	D	D	D		X	D	X		D			
Workstation, Nurse/MA/Other		D	D	D	D		X	D	X		D			
Handwashing Sink														
Copier/Printer														
Emergency Crash Cart														
Medication Prep Room				X		D		D						
Medication Prep Alcove				D		D		D						
Alcove, Equipment														
Clean Supply/Linen Holding														
Office, Private, Manager		D	D	D	X		X	D	X	D	D			
Office, Shared, 2-Person, Administration		D	D	D	X		X	D	X	D	D			

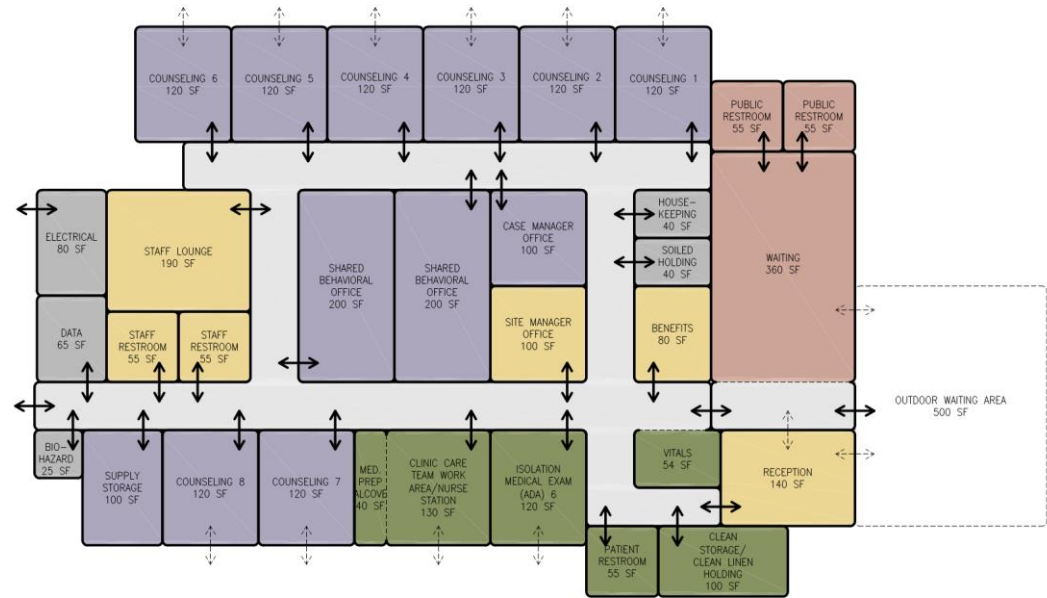
Behavioral Health

Counseling Room	X	D	D	X			X	X	X	D	D	D	X	
Office, Case Manager		D	D	D	X		X	D	X	D	D			
Office, Shared, 5-6 stations		D	D	D	X		X	D	X	D	D			
Supply Storage														

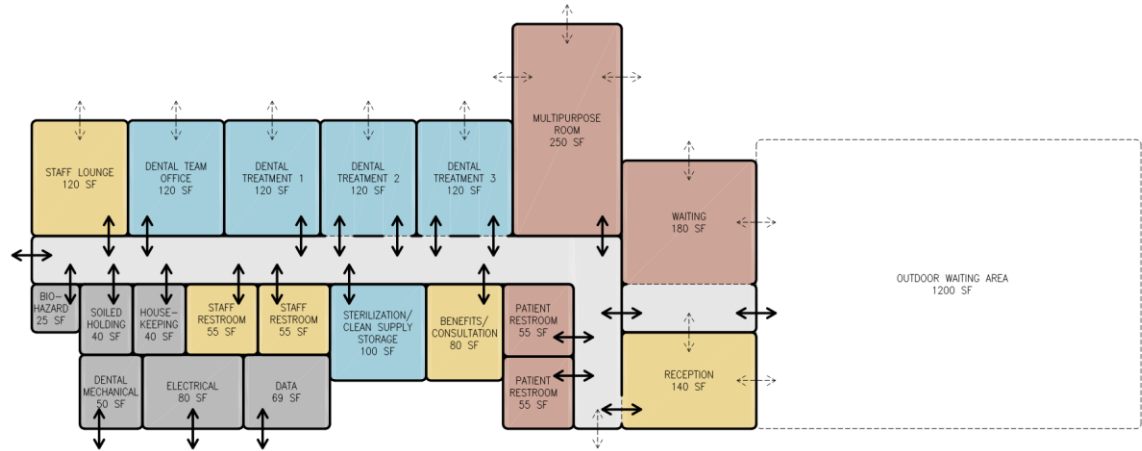
Dental Clinic

Dental Treatment Space	X	D	D	X			X	X	X		D	D		
Dental Treatment Room, Peds	X	D	D	X			X	X	X		D	D		
Panoramic X-Ray Room														
Sterilization/Clean Supply Storage				X		D		D						
Dental Lab				X		D		D						
Office, Dental Team, Shared, 3-Person		D	D	D	X		X	D	X	D	D			
Consultation		D	D	D	X		X	D	X	D	D			

Programming for Site Specific Needs

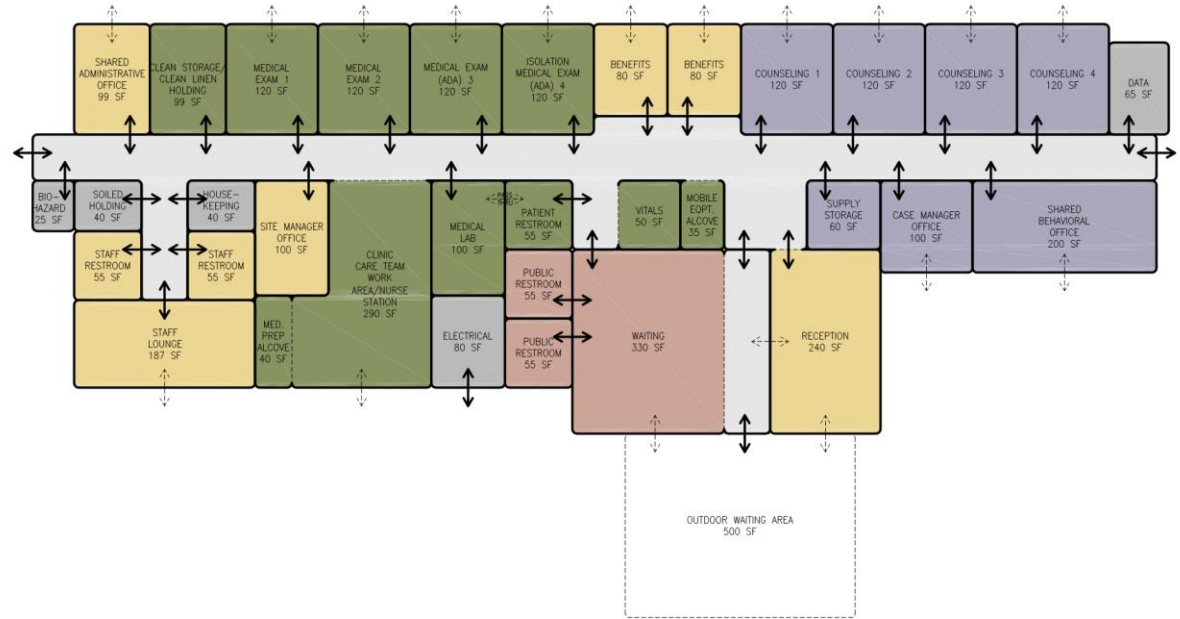


Programming for Site Specific Needs



FREMONT

Programming for Site Specific Needs



New Construction

North Hills Wellness Center



Fremont Wellness Center

- Wellness Center
- Green House
- Garden
- Student – Family - Community



- 1. Garden
- 2. Wellness Center
- 3. Outdoor seating area
- 4. Plaza
- 5. Parking lot
- 6. Entrance
- 7. Garden
- 8. Plaza
- 9. Garden
- 10. Garden
- 11. Garden
- 12. Garden
- 13. Garden
- 14. Garden
- 15. Garden
- 16. Garden
- 17. Garden
- 18. Garden
- 19. Garden
- 20. Garden
- 21. Garden
- 22. Garden
- 23. Garden
- 24. Garden
- 25. Garden
- 26. Garden
- 27. Garden
- 28. Garden
- 29. Garden
- 30. Garden
- 31. Garden
- 32. Garden
- 33. Garden
- 34. Garden
- 35. Garden
- 36. Garden
- 37. Garden
- 38. Garden
- 39. Garden
- 40. Garden
- 41. Garden
- 42. Garden
- 43. Garden
- 44. Garden
- 45. Garden
- 46. Garden
- 47. Garden
- 48. Garden
- 49. Garden
- 50. Garden

In a quiet corner of the Fremont neighborhood, a new wellness center is being built. The Fremont Wellness Center is a new wellness center that will provide a safe and healthy environment for the community. The center will include a garden, a wellness center, and a community space. The garden will be a place where people can grow their own food and connect with nature. The wellness center will provide a place where people can get a massage, a chiropractic adjustment, and other wellness services. The community space will be a place where people can meet and connect with each other.

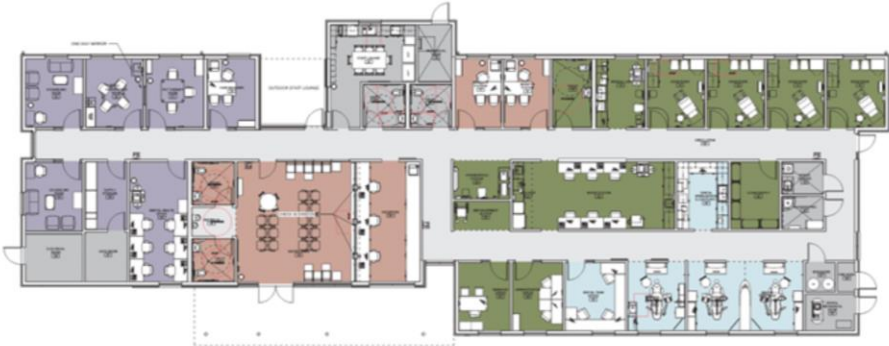


Maclay Wellness Center

- Welcoming feeling and provide shade and shelter
- Patient-centered
- Healing environment
- Hospitality (not an institutional sensibility)
- Positive and inviting
- Visible presence on the street inviting the community
- Outdoor areas provide overflow waiting space
- Outdoor spaces with seating options and places for children to play and expand the wellness programs



Maclay Wellness Center



FLOOR PLAN
1/8" = 1'-0"

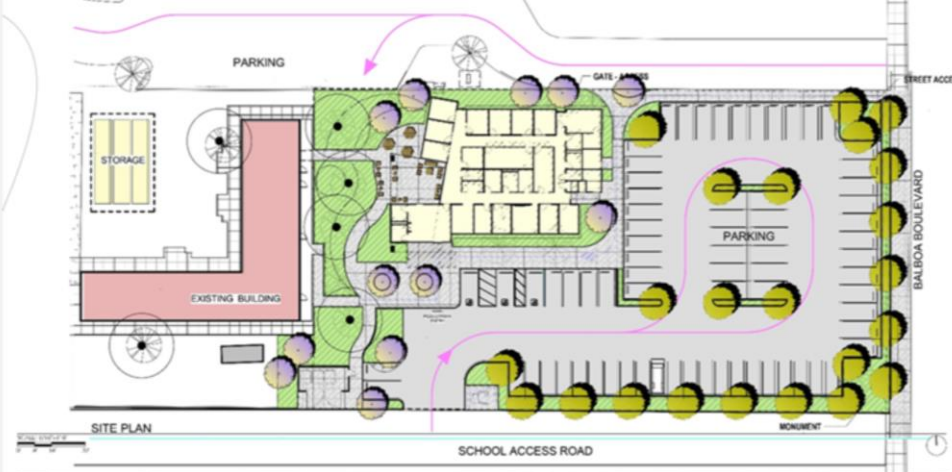


Maclay Wellness Center

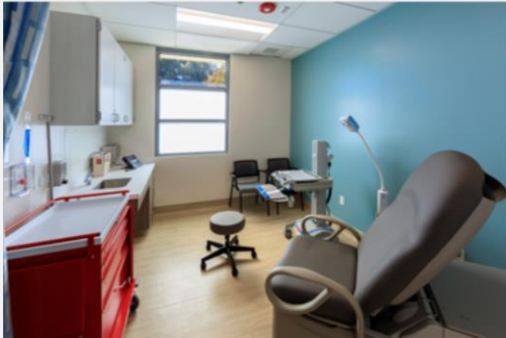
- Massing and Scale
 - The canopy with open skylights welcome the public with celebration
- Materials and Building Envelope
 - Material selections, both interior and exterior, are based on their aesthetic and long-term maintenance characteristics.
 - The elevation takes the form of the verticality of the surrounding trees.
 - DNA pattern material, color, and texture was used on the building exterior to enhance visual experience of the building.
- Biophilic Design and Sustainability
 - The exterior and interior is closely associated with natural forms of life.
 - The design considers the physiological human responses to the natural environment in order to reduce stress.
 - Design connects the waiting areas to the surrounding garden.
 - The planting areas are designed to provide visual and non-visual access to elements of nature



Balboa Wellness Center



Balboa Wellness Center

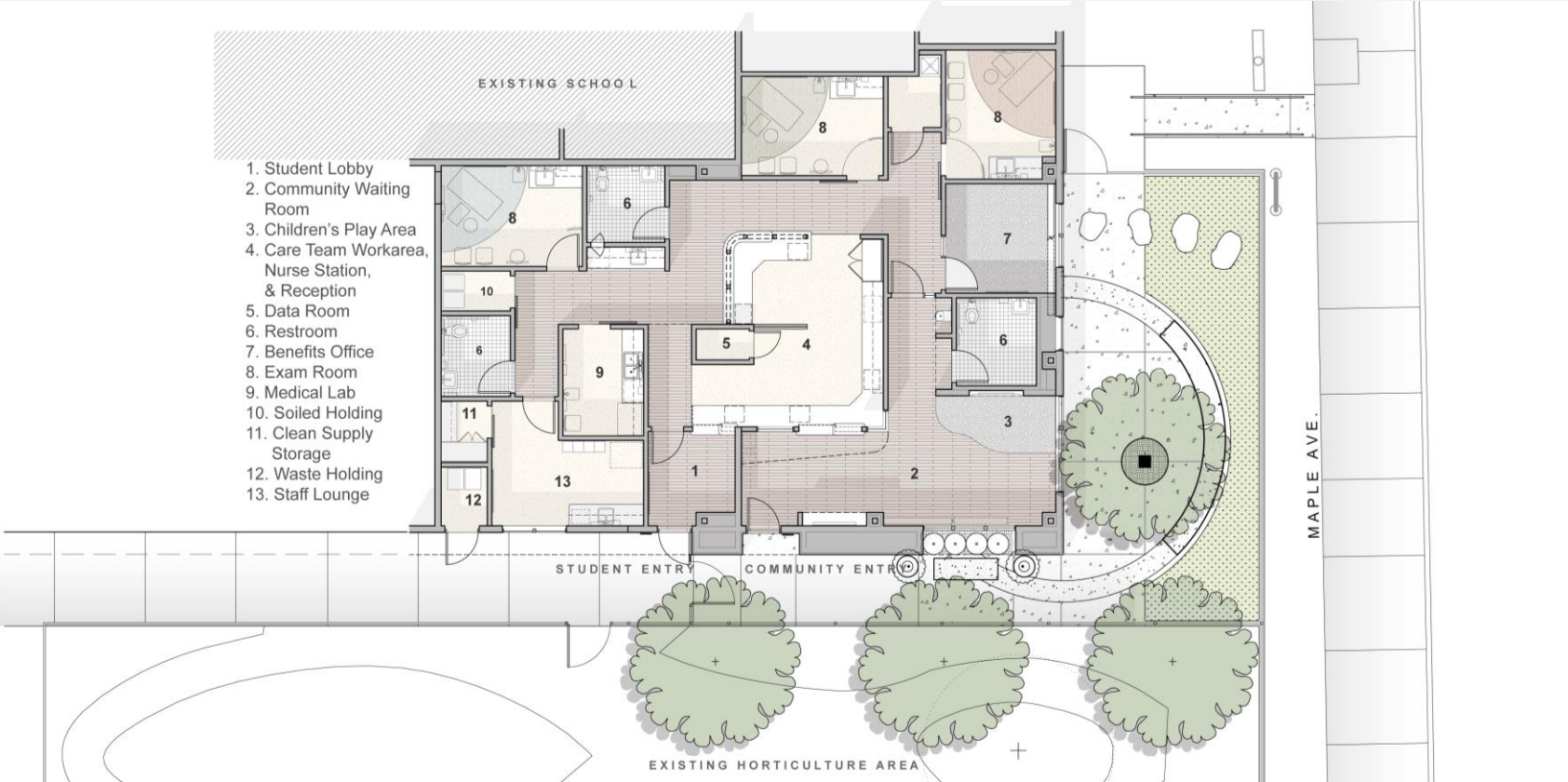


Balboa Wellness Center



Modernization / Remodel

Santee High School



Santee High School

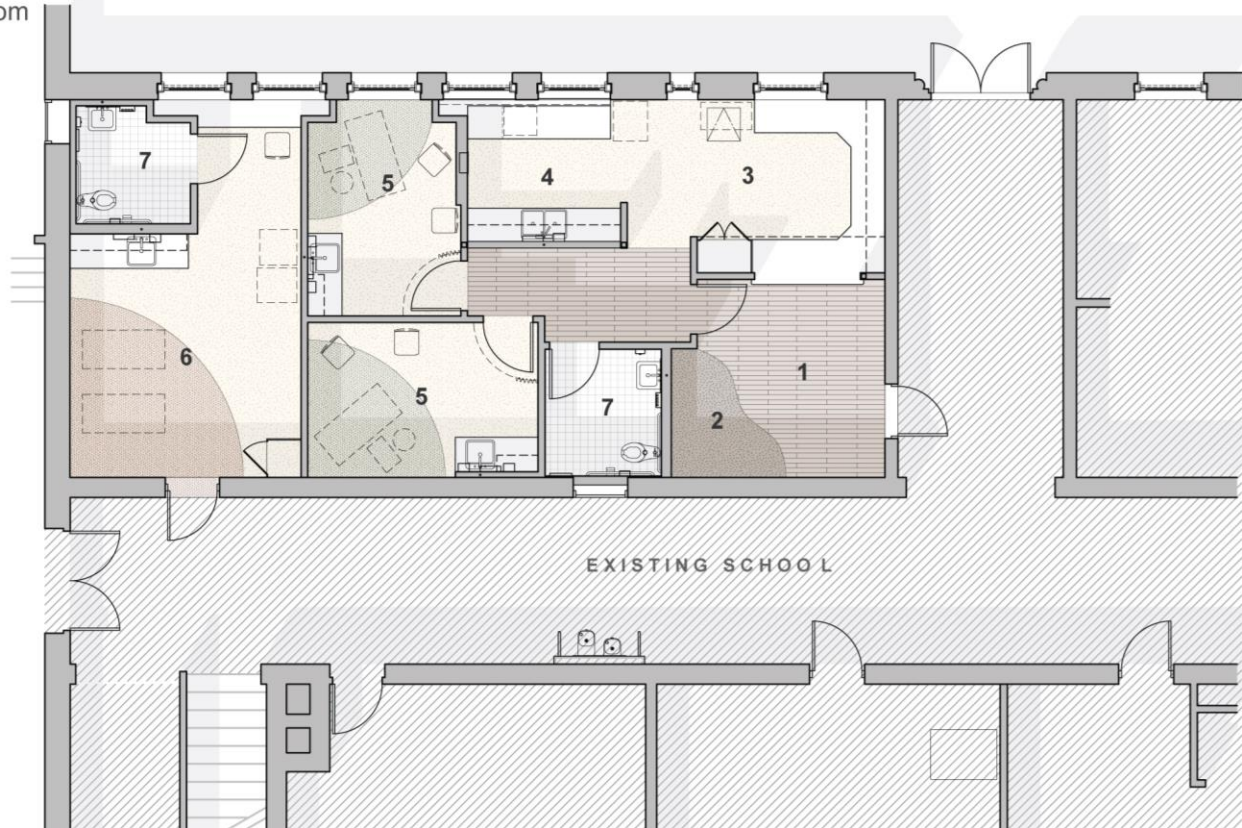


Santee High School



Holmes Elementary School

1. Community Waiting Room
2. Children's Play Area
3. Care Team Workarea & Reception
4. Medical Lab
5. Exam Room
6. School Nurse's Office
7. Restroom



Holmes Elementary School

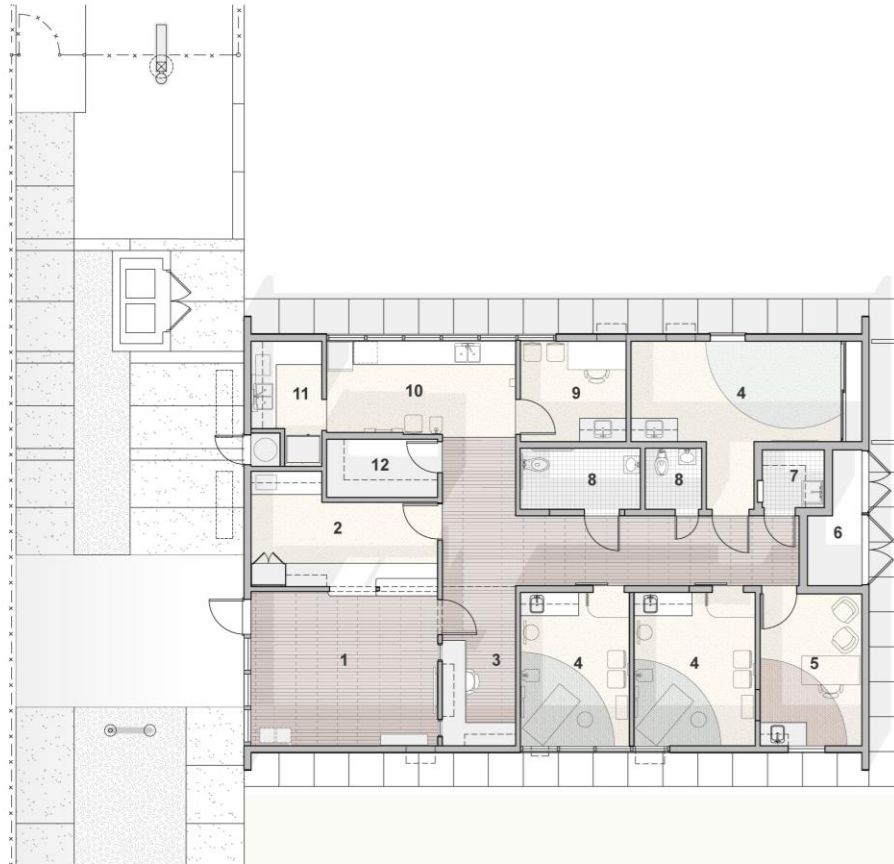


Holmes Elementary School



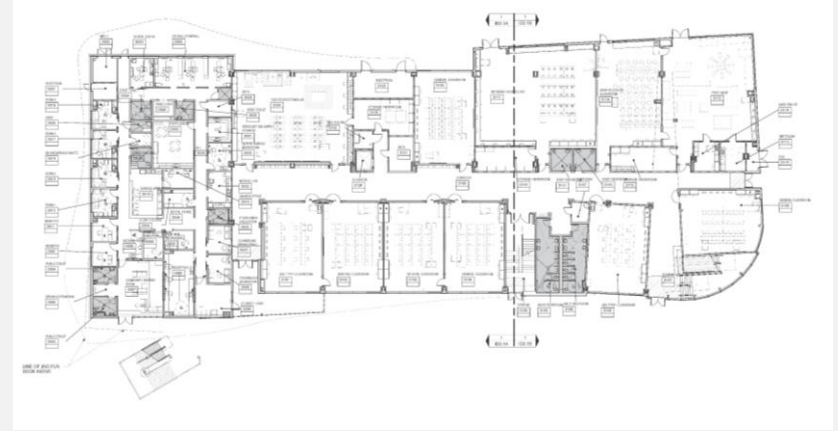
Telfair

1. Waiting Room
2. Reception/Copy
3. Itinerants
4. Exam Room
5. Counseling
6. HVAC Room
7. Housekeeping
8. Restroom
9. Office
10. Medical Lab
11. Break Room
12. Storage



Part of Larger Project

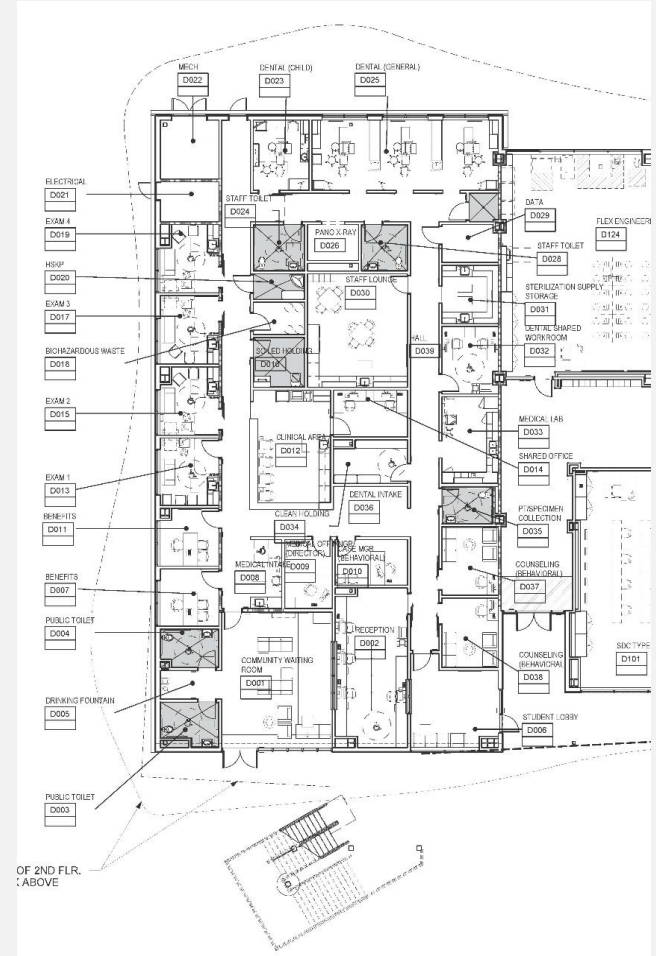
Jefferson High School



Jefferson High School Comprehensive Modernization Project
HMC Architects



Jefferson High School



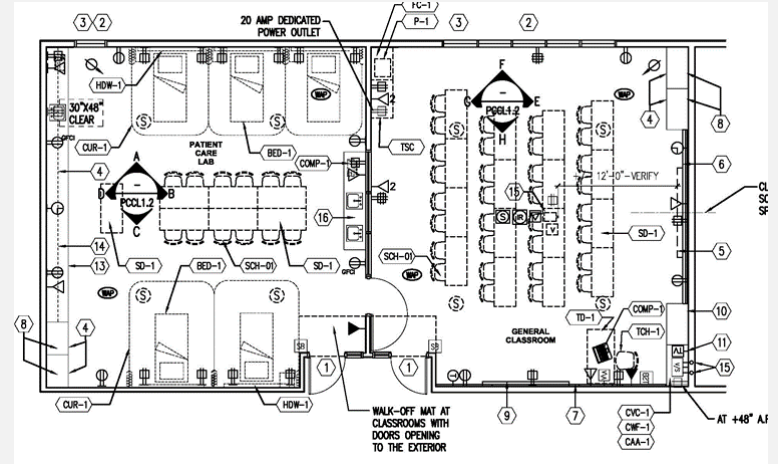
Jefferson High School



Roosevelt High School



Roosevelt High School Comprehensive Modernization Project LPA Design Studios



Adjacency to Patient Care CTE Program

Roosevelt High School



Other Thoughts

Growing Healthy Humans

How do we make schools healthier places?

- Improved IAQ – ventilation, windows
- Healthy food – refrigeration, teaching spaces in food services, gardens
- Exercise – how does design encourage movement
- Access to nature

Best Practices - Hygiene

- Hand washing stations
- Pathway from restroom to dining – ease of use
- Laundry rooms
- Access to menstrual products



MACLAY MIDDLE SCHOOL WELLNESS CENTER
WAYFINDING / PEDESTRIAN WALK TO FRONT ENTRANCE



LearningSCAPES 2023

THANK YOU!